

SAME-DAY DISCHARGE AFTER PAROXYSMAL AF CATHETER ABLATION

Rajendra A, Hunter TD, Morales G, Osorio J. *J Interv Card Electrophysiol*. Published online November 21, 2020. doi:10.1007/s10840-020-00914-8.

WHY IS THIS IMPORTANT?

This real-world study implemented a specific protocol to prospectively identify paroxysmal AF patients suitable for SDD and a postprocedural checklist to safely execute SDD.

1

PREPROCEDURE SDD ELIGIBILITY CRITERIA

- ✓ Stable anticoagulation
- ✓ Absence of bleeding history
- ✓ No systolic heart failure
- ✓ No history of pulmonary disease
- ✓ No interventional procedures within 60 days of ablation
- ✓ BMI <35 (recommended)
- ✓ Acceptable CHA₂DS₂-VASc stroke risk (typically ≤3)

2

RADIOFREQUENCY CATHETER ABLATION PERFORMED BEFORE 1:00 PM^a



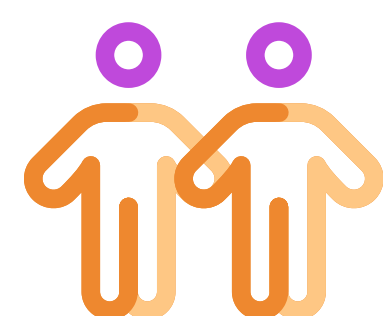
(N=41 patients)

Procedure Time	59 min
Radiofrequency Time	27 min
PV Ablation Time	20 min
Fluoroscopy Time	0.01 min
Time to Isolate Left PVs	4 min
Time to Isolate Right PVs	7 min

3

POSTPROCEDURE SDD DISCHARGE CRITERIA

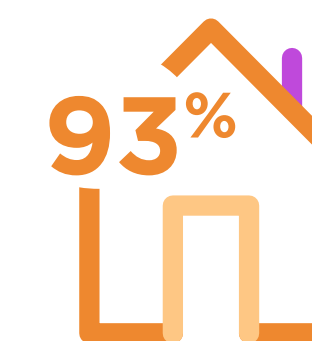
- ✓ Procedure occurred without complications
- ✓ Postprocedure confirmation by operator to proceed with SDD
- ✓ Purse string suture removed
- ✓ Stable hemodynamics
- ✓ No evidence of groin or respiratory complications
- ✓ Able to tolerate liquids/food
- ✓ Able to ambulate



1:1 cohort matching
with patients undergoing
overnight stay procedures



NO SAFETY DIFFERENCES
WERE OBSERVED BETWEEN SDD
AND OVERNIGHT COHORTS



SDD PROTOCOL SUCCESS
41/44 OF PATIENTS WENT
HOME AFTER 8-HR OF
OBSERVATION

^a Real world evidence from a single site

AF, atrial fibrillation; BMI, body mass index; CHA₂DS₂-VASc, congestive heart failure, hypertension, age ≥ 75 years, diabetes mellitus, stroke or transient ischemic attack, vascular disease, age 65 to 74 years, sex category; PVs, pulmonary veins; SDD, same-day discharge.

THERMOCOOL® Navigation Catheters are indicated for the treatment of drug refractory recurrent symptomatic paroxysmal atrial fibrillation, when used with CARTO® 3 Systems (excluding NAVISTAR™ RMT THERMOCOOL™ Catheter).