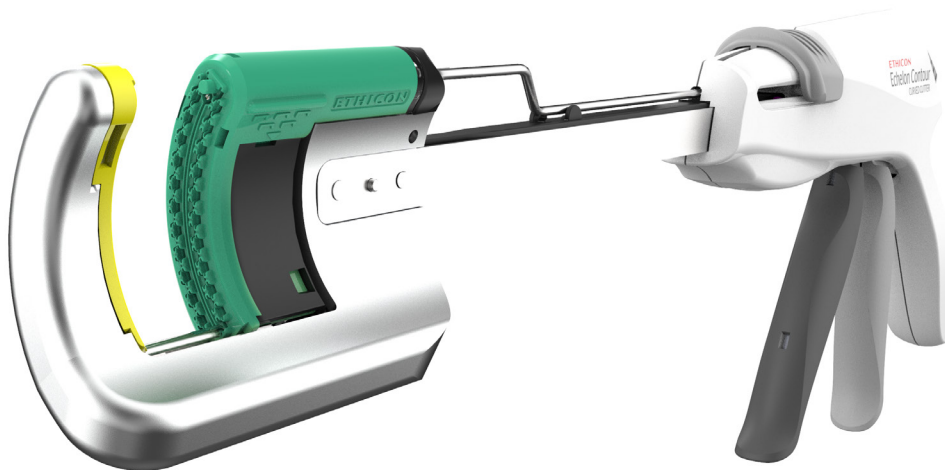


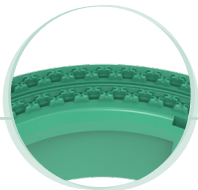
Echelon Contour™

The new ECHELON CONTOUR™ Curved Cutter Designed to minimize leak pathways^{1*}

The same innovative **3D Stapling** and **Gripping Surface technologies**
used on the ECHELON CIRCULAR™ Powered Stapler



Gentle tissue handling, while providing a strong staple line.^{2#}



Gripping Surface Technology (GST)

Less compressive forces on tissue^{3†}

Gripping Surface Technology (GST), a proprietary ridged surface, precisely compresses tissue where needed.⁴



3D Stapling Technology

Designed to evenly distribute compression throughout the staple line^{1*}

With a gentle curved design, 3D Stapling is designed:

- To minimize high stress points throughout the staple line^{1*}
- To evenly distribute compression throughout the staple line^{1*}
- To limit potential leak pathways^{1*}

Ordering information

ECHELON CONTOUR™ Curved Cutter



Catalog #	Description	Tissue	Staple rows	Cut line length	Staple line length	Max firings	Qty
GCS40B	ECHELON CONTOUR™ Curved Cutter with Blue Reload 40mm	Standard	4	40mm	51mm	6	3
GCS40G	ECHELON CONTOUR™ Curved Cutter with Green Reload 40mm	Thick	4	40mm	51mm	6	3

ECHELON CONTOUR™ GST Reload



Catalog #	Description	Tissue	Closed staple height	Open staple height	Wire diameter	Qty
GCR40B	ECHELON CONTOUR™ GST Reload Blue	Standard	1.5mm	3.5mm	0.20mm	6
GCR40G	ECHELON CONTOUR™ GST Reload Green	Thick	2.0mm	4.7mm	0.23mm	6

*Finite element-based computational simulations (FEA) on simulated porcine tissue measuring tissue compression after approximation and staple formation, comparing average standard deviation of 5.481 for 2D staples to 5.109 for 3D staples (n=37, p<0.05). #Benchtop testing in porcine tissue for GCS40B and GCS40G. 0.9 reliability at 90% confidence on indicated tissue for each reload. Design verification of staple line integrity †Benchtop testing in porcine colon comparing mean compression load of 22.35 lbf (n=32) for ECHELON CONTOUR to 32.56 lbf (n=30) for CONTOUR (p<0.05)

1. Ethicon, 500561940A.7 Silhouette Tissue Compression Simulation [Claims - EU], Oct 2020. Ethicon, 500632160A Design Intent for Echelon Contour Curved Cutter, Jan 2021, Data on file (170554-210315 EMEA) 2. Ethicon, 500632160A Design Intent for Echelon Contour Curved Cutter, Jan 2021, Data on file. Ethicon, PRC093619A Silhouette DV FSH/SLI in Tissue Completion Report, April 2020, Data on file. Ethicon, PRC091498A Silhouette Leak Onset Pressure Equivalency Completion Report, Nov 2019, Data on file (166723-210208 EMEA) 3. Ethicon, 500632160A Design Intent for Echelon Contour Curved Cutter, Jan 2021, Data on file. Ethicon, PRC092073A Silhouette Shaft Compression Force Claims Testing, Jan 2016, Data on file (166727-210208 EMEA) 4. Ethicon, 500632160A Design Intent for Echelon Contour Curved Cutter, Jan 2021, Data on file (166725-210208 EMEA)

Please refer always to the Instructions for Use / Package Insert that come with the device for the most current and complete instructions.

The third party trademarks used herein are the trademarks of their respective owners.

Ethicon Endo-Surgery (Europe) GmbH
Hummelsbütteler Steindamm 71
22851 Norderstedt
Germany

For UK enquires:
Johnson & Johnson Medical Limited
Baird House, 4 Lower Gilmore Bank
Edinburgh, EH3 9QP
United Kingdom

www.jnjmedicaldevices.com

© Ethicon Endo-Surgery (Europe) GmbH 2021, 173074-210407 EMEA / UK

ETHICON
PART OF THE *Johnson & Johnson* FAMILY OF COMPANIES

Shaping
the future
of surgery