

## DERMABOND ADVANCED® Topical Skin Adhesive

# Recommendations to Help Minimize Skin Reactions



Skin reactions (i.e., redness, itchy rashes, blisters, etc.) occur after the use of DERMABOND ADVANCED Adhesive in a very small population of patients. Using the recommendations below, which are based on the product label, the potential for these reactions may be minimized.

## Before Applying the Product – Patient Selection

**DERMABOND ADVANCED Adhesive should not be used in patients with a known hypersensitivity to cyanoacrylate, formaldehyde or benzalkonium chloride (BAC).<sup>1</sup>** Because these ingredients can also be found in non-medical devices such as household or beauty products, ask your patient about any previous skin reactions to the following products as this may indicate a sensitivity to the ingredients in DERMABOND ADVANCED Adhesive.

<b>Cyanoacrylate</b>	<b>Super glue, False eyelashes, False fingernails</b>	  
<b>Formaldehyde</b>	<b>Paints, Varnishes, Industrial adhesives (e.g., carpet glue)</b>	  
<b>Benzalkonium chloride (BAC)</b>	<b>Cosmetics, Cleaning wipes (e.g., Lysol® wipes), Antibacterial adhesive bandages</b>	  

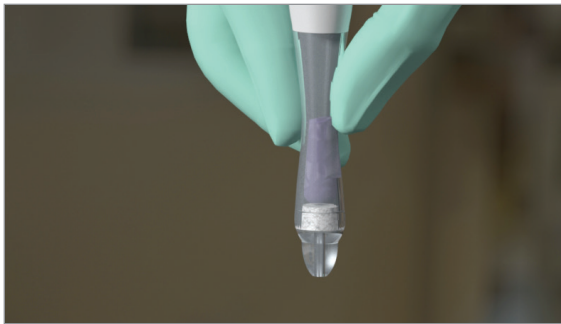
# Product Application

**Properly apply the topical skin adhesive to help minimize the risk of skin reactions.<sup>1</sup>**

Wear sterile gloves while applying adhesive. Ensure wound is thoroughly cleansed and hemostasis achieved. Pat wound dry.

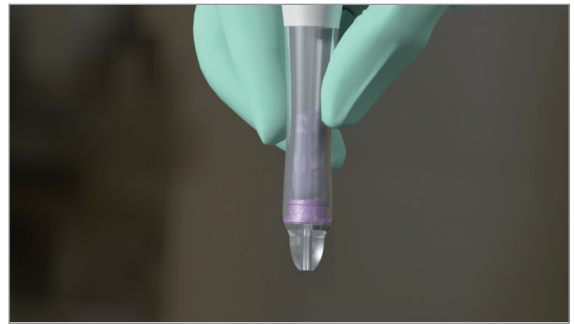
## STEP 1

While holding the applicator away from the patient, point tip downward, squeeze the bulb once to crush the enclosed ampoule. Release pressure. **Do not continually crush the ampoule.**



## STEP 2

Moisten the internal filter by gently squeezing the bulb again. Stop squeezing to **allow adhesive to draw back into the applicator.**



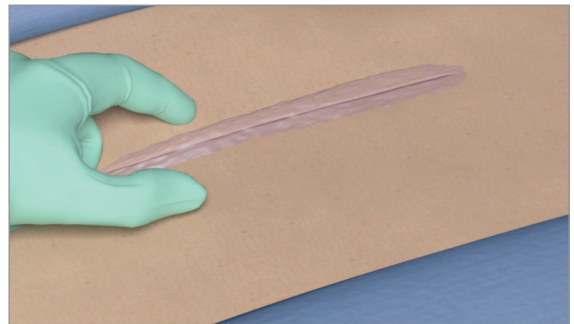
## STEP 3

Approximate the wound edges with one hand. With the other hand, gently squeeze the bulb, maintaining steady pressure. **Apply a single continuous layer** of DERMABOND ADVANCED Adhesive to the wound. You'll avoid clogging the tip by keeping pressure to a minimum while applying.



## STEP 4

**A second layer is not required or recommended.** Hold skin edges for 60 seconds or longer. When adhesive is no longer sticky or tacky, full polymerization has occurred.



**For complete indications, contraindications, warnings, precautions, and adverse reactions, please reference full package insert.**