

NAVIGATION-READY

Product Catalogue

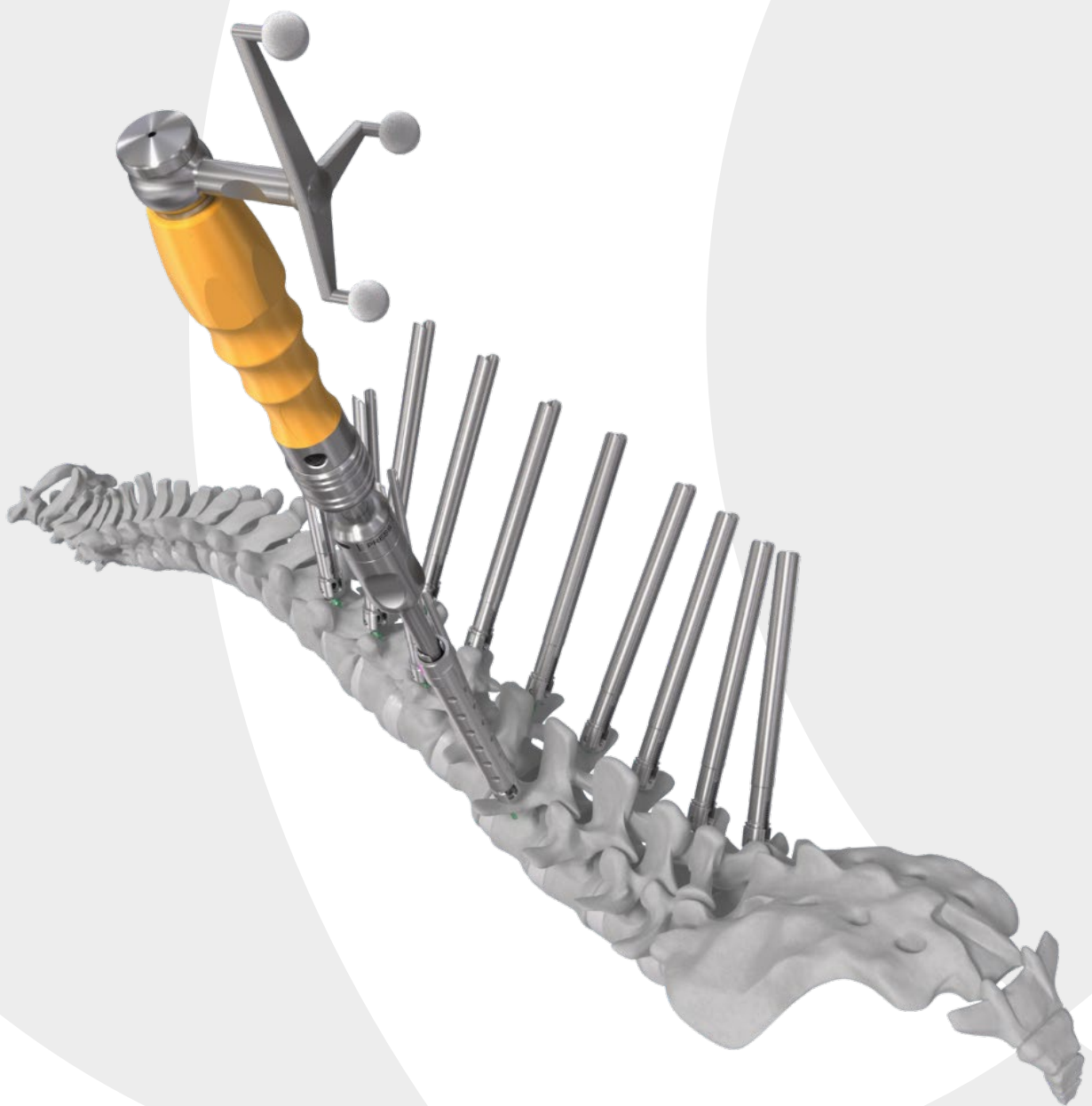


TABLE OF CONTENTS

NAVIGATION-READY INSTRUMENTS COMPATIBLE WITH BRAINLAB NAVIGATION	EXPEDIUM® Spine System	3
	VIPER® MIS Spine System	6
	VIPER Spine System	9

NAVIGATION-READY INSTRUMENTS COMPATIBLE WITH MEDTRONIC NAVIGATION	EXPEDIUM Spine System	10
	VIPER MIS Spine System	11

SET CONFIGURATIONS	EXPEDIUM 5.5 Spine System Navigation for use with Brainlab, pre-calibrated (EXIGSB)	13
	EXPEDIUM 5.5 Spine System Navigation for use with Brainlab and Medtronic, manual-calibrated (EXUGSB)	14
	VIPER MIS Spine System Navigation for use with Brainlab, pre-calibrated (VIIGSB)	15
	VIPER MIS Spine System Navigation for use with Brainlab and Medtronic, manual-calibrated (VIUGSB)	17

For correct use of *DePuy Synthes Spine* instruments and implants, refer to *DePuy Synthes Spine* system guides.

For correct use of navigation systems and third party navigation instruments and accessories, refer to the navigation manufacturer's user guides.

NAVIGATION-READY INSTRUMENTS COMPATIBLE WITH BRAINLAB NAVIGATION

EXPEDIUM® Spine System

Instruments are designed for pre-calibrated and manual-calibrated use with Brainlab Navigation.

Pedicle Awl

ITEM #	DESCRIPTION
2750-10-050N	Pedicle Awl



Pedicle Probes

ITEM #	DESCRIPTION
2797-02-010N	Lumbar Probe, straight
2797-02-020N	Lumbar Probe, curved
2797-02-030N	Thoracic Probe, straight
2797-02-040N	Thoracic Probe, curved



Dual-Lead Taps

ITEM #	DESCRIPTION	SIZE
2797-02-400N	Dual-Lead Tap	4.35 mm
2797-02-500N	Dual-Lead Tap	5.00 mm
2797-02-600N	Dual-Lead Tap	6.00 mm
2797-02-700N	Dual-Lead Tap	7.00 mm
2797-02-800N	Dual-Lead Tap	8.00 mm



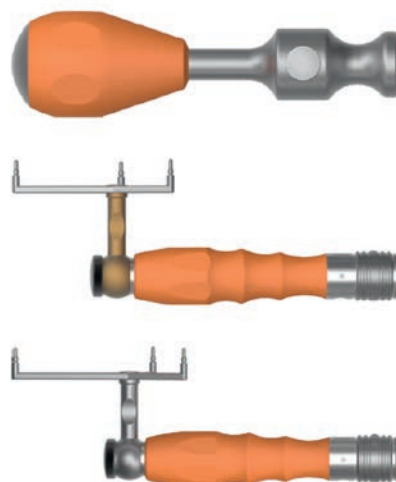
Screwdrivers

ITEM #	DESCRIPTION
2797-34-000N	5.5 Universal Quick Connect Poly Driver
2797-12-830N	EXPEDIUM System Mono Driver



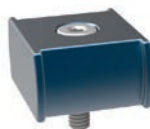
Handles

ITEM #	DESCRIPTION
3010-05-000N	Navigation Handle, stationary
3010-10-100N	Pre-calibrated Navigation Handle
3010-10-200N	Manual-calibrated Navigation Handle
3010-10-300N	Manual-calibrated 180 Degree Navigation Handle



Adaptors

ITEM #	DESCRIPTION
2867-55-001N	Universal Navigation Adaptor
2867-55-010N	Universal Navigation Clamp Attachment, Small
2867-55-011N	Universal Navigation Clamp Attachment, Large
2796-00-120	SLIM-LOC Hex Head Screwdriver



Brainlab Star Units

ITEM #	DESCRIPTION
55830-20A	Instrument Star Unit (Pre-calibrated)
55830-27	Instrument Star Unit (Pre-calibrated) '4 Marker'
55830-25A	Instrument Star Unit ML (Calibration with ICM4)



VIPER® MIS Spine System

Instruments are designed for pre-calibrated and manual-calibrated use with Brainlab Navigation.

Needles and Needle Accessories

ITEM #	DESCRIPTION
2867-01-150N	Navigated Pedicle Access Cannula
2839-03-611	11GA 6 in Diamond Tip CONFIDENCE SPINAL CEMENT SYSTEM Needle (Single Use)
41798	Instrument Adapter Array StarLink
2757-20-000	Guide Wire, 660mm, sharp tip



Awl

ITEM #	DESCRIPTION
2867-15-210N	Cannulated Awl



Probe

ITEM #	DESCRIPTION
2867-10-116N	Cannulated Pedicle Probe



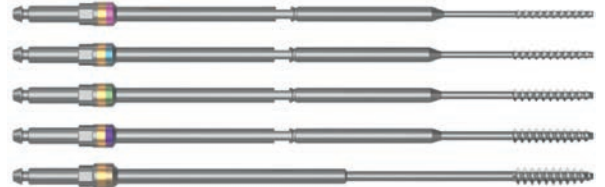
Accessories For Use With Cannulated Instruments

ITEM #	DESCRIPTION
2867-10-117N	IGS Trocar
2867-10-118N	IGS Cannulated Probe End Cap



Dual-Lead Cannulated Taps

ITEM #	DESCRIPTION	SIZE
2867-15-450 N	Dual-Lead Cannulated Tap	4.35 mm
2867-15-500 N	Dual-Lead Cannulated Tap	5.00 mm
2867-15-600 N	Dual-Lead Cannulated Tap	6.00 mm
2867-15-700 N	Dual-Lead Cannulated Tap	7.00 mm
2867-15-800 N	Dual-Lead Cannulated Tap	8.00 mm



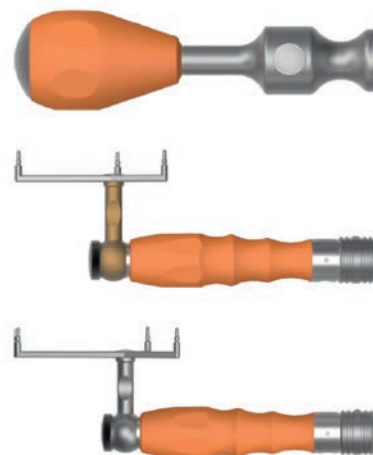
Screwdrivers

ITEM #	DESCRIPTION
2797-34-000N	5.5 Universal Quick Connect Poly Driver
2867-60-010N	X-Tab Poly Screw Driver 10 mm
2867-20-000N	Polyaxial Screw Driver Shaft
2867-20-100N	Cannulated Mono Driver
2867-60-017N	X-Tab Poly Driver 25MM



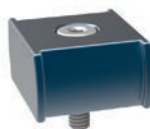
Handles

ITEM #	DESCRIPTION
3010-05-100N	Navigation Cannulated Palm Handle
3010-10-100N	Pre-calibrated Navigation Handle
3010-10-200N	Manual-calibrated Navigation Handle
3010-10-300N	Manual-calibrated 180 Degree Navigation Handle



Adaptors

ITEM #	DESCRIPTION
2867-55-001N	Universal Navigation Adaptor
2867-55-010N	Universal Navigation Clamp Attachment, Small
2867-55-011N	Universal Navigation Clamp Attachment, Large
2796-00-120	SLIM-LOC Hex Head Screwdriver



VIPER Spine System

Instruments are designed for pre-calibrated and manual-calibrated use with Brainlab Navigation.

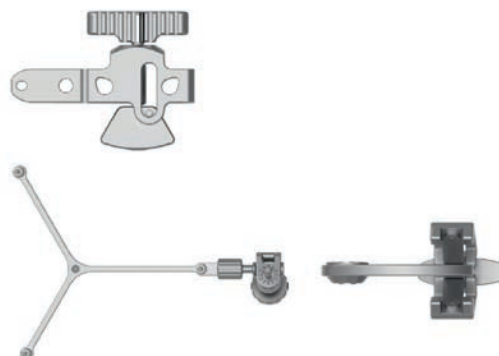
Brainlab Star Units

ITEM #	DESCRIPTION
55830-20A	Instrument Star Unit (Pre-calibrated)
55830-27	Instrument Star Unit (Pre-calibrated) '4 Marker'
55830-25A	Instrument Star Unit ML (Calibration with ICM4)
41798	Universal Instrument Adapter Array, StarLink, Size M



Brainlab MIS Patient Reference Frame*

ITEM #	DESCRIPTION
52420A	Bone Fixator 2-Pin X-press
52411A	Reference Array, Y Geometry (2-piece)



NAVIGATION-READY INSTRUMENTS COMPATIBLE WITH MEDTRONIC NAVIGATION

Hospital needs Medtronic Navigation SureTrak®II clamps and/or fighter arrays for compatibility

EXPEDIUM Spine System

Instruments are designed for manual-calibrated use with Medtronic Navigation.

Dual-Lead Taps

ITEM #	DESCRIPTION	SIZE
2797-02-400N	Dual-Lead Tap	4.35 mm
2797-02-500N	Dual-Lead Tap	5.00 mm
2797-02-600N	Dual-Lead Tap	6.00 mm
2797-02-700N	Dual-Lead Tap	7.00 mm
2797-02-800N	Dual-Lead Tap	8.00 mm



Screwdrivers

ITEM #	DESCRIPTION
2797-34-000N	5.5 Universal Quick Connect Poly Driver
2797-12-830N	EXPEDIUM System Mono Driver



Adaptors and Accessories

ITEM #	DESCRIPTION
2867-55-001N	Universal Navigation Adaptor



2867-55-010N	Universal Navigation Clamp Attachment, Small
--------------	--



2867-55-011N	Universal Navigation Clamp Attachment, Large
--------------	--



2796-00-120	SLIM-LOC Hex Head Screwdriver
-------------	-------------------------------

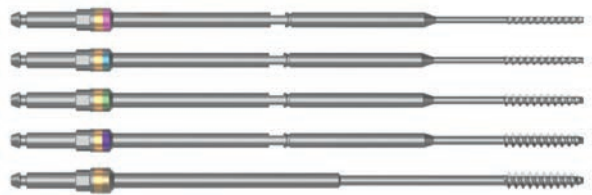


VIPER MIS Spine System

Instruments are designed for manual-calibrated use with Medtronic Navigation.

Dual-Lead Cannulated Taps

ITEM #	DESCRIPTION	SIZE
2867-15-450N	Dual-Lead Cannulated Tap	4.35 mm
2867-15-500N	Dual-Lead Cannulated Tap	5.00 mm
2867-15-600N	Dual-Lead Cannulated Tap	6.00 mm
2867-15-700N	Dual-Lead Cannulated Tap	7.00 mm
2867-15-800N	Dual-Lead Cannulated Tap	8.00 mm



Screwdrivers

ITEM #	DESCRIPTION
2797-34-000N	5.5 Universal Quick Connect Poly Driver
2867-60-010N	X-Tab Poly Screw Driver 10 mm
2867-20-000N	Polyaxial Screw Driver Shaft
2867-20-100N	Cannulated Mono Driver
2867-60-017N	X-Tab Poly Driver 25MM

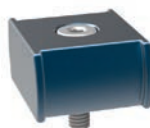


Adaptors

ITEM #	DESCRIPTION
2867-55-001N	Universal Navigation Adaptor



2867-55-010N	Universal Navigation Clamp Attachment, Small
--------------	--



2867-55-011N	Universal Navigation Clamp Attachment, Large
--------------	--



2796-00-120	SLIM-LOC Hex Head Screwdriver
-------------	-------------------------------



SET CONFIGURATIONS

Customers may customize a set to purchase based on their own unique needs or choose from the standard set configurations listed here.

EXPEDIUM 5.5 Spine System Navigation for use with Brainlab, pre-calibrated (EXIGSB)

Graphic Case

3010-20-100N EXPEDIUM System IGS Case, Tray and Lid

Instruments

2750-10-050N Pedicle Awl

2797-02-010N Lumbar Probe, straight

2797-02-020N Lumbar Probe, curved

2797-02-030N Thoracic Probe, straight

2797-02-040N Thoracic Probe, curved

Dual-Lead Taps

2797-02-400N 4.35 mm

2797-02-500N 5.0 mm

2797-02-600N 6.0 mm

2797-02-700N 7.0 mm

2797-02-800N 8.0 mm

2797-34-000N 5.5 Universal Quick Connect Poly Driver, 2 ea

3010-05-000N Navigation Handle Stationary, 2 ea

3010-10-100N Pre-calibrated Navigation Handle

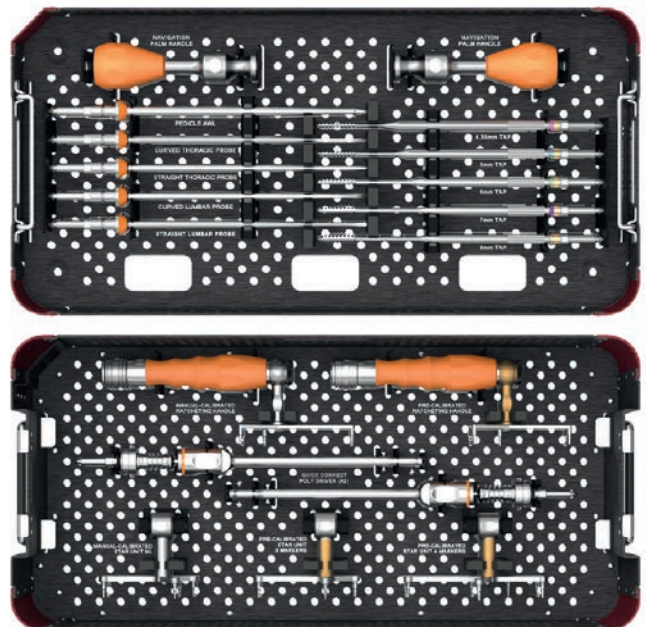
3010-10-200N Manual-calibrated Navigation Handle

Brainlab Instruments

55830-20A Instrument Star Unit (Pre-calibrated)

55830-27 Instrument Star Unit (Pre-calibrated)
'4 markers'

55830-25A Instrument star Unit ML
(Calibration with ICM4)



EXPEDIUM 5.5 Spine System Navigation for use with Brainlab and Medtronic, manual-calibrated (EXUGSB)

Graphic Case

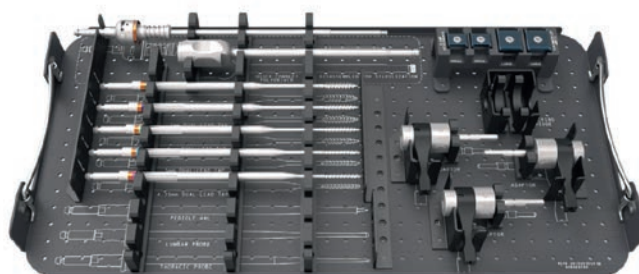
3010-20-300N	Universal Nav EXPEDIUM System 5.5 IGS Case
3010-20-301N	Universal Nav EXPEDIUM System 5.5 IGS Tray
2797-92-109	EXPEDIUM System Instrument Case Lid



Instruments

Dual-Lead Taps

2797-02-400N	4.35 mm
2797-02-500N	5.0 mm
2797-02-600N	6.0 mm
2797-02-700N	7.0 mm
2797-02-800N	8.0 mm



2797-34-000N	5.5 Universal Quick Connect Poly Driver, 2 ea
2867-55-001N	Universal IGS Adaptor, 3ea
2867-55-010N	Universal Clamp Attachment, small, 2ea
2867-55-011N	Universal Clamp Attachment, large, 2 ea
2796-00-120	SLIM-LOC Hex Head Screwdriver

Note: Pre-calibrated instruments are the preferred option for use with the EXPEDIUM System and Brainlab Navigation (set EXIGSB).

VIPER MIS Spine System Navigation for use with Brainlab, pre-calibrated (VIIGSB)

Graphic Case

3010-20-200N VIPER System IGS Alpha Launch Case, Tray and Lid

Instruments

2867-01-150N Navigated Pedicle Access Cannula

2867-15-210N Awl, cannulated

2867-10-116N Pedicle Probe, cannulated

2867-10-117N Replaceable Inner Trocar

2867-10-118N End Cap for Trocar

Dual-Lead Taps, Cannulated

2867-15-450N 4.35 mm

2867-15-500N 5.0 mm

2867-15-600N 6.0 mm

2867-15-700N 7.0 mm

2867-15-800N 8.0 mm

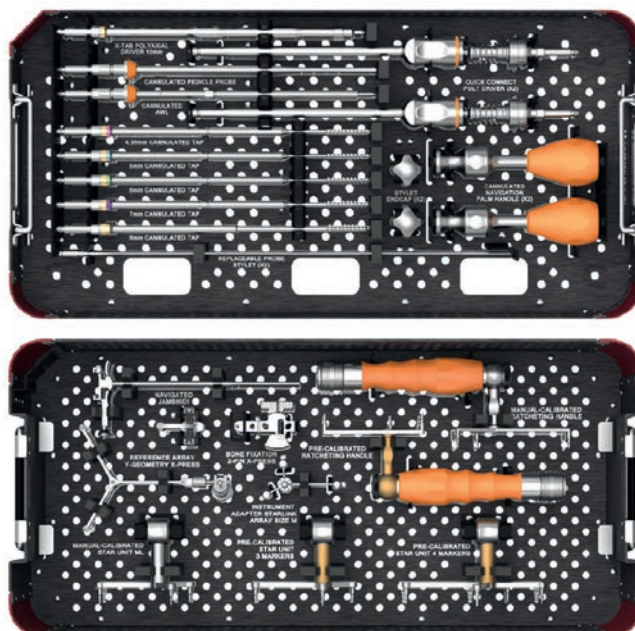
2797-34-000N 5.5 Universal Quick Connect Poly Driver, 2 ea

2867-60-010N 5.5 X-Tab Polyaxial Driver 10 mm

3010-05-000N Navigation Handle Stationary, 2 ea

3010-10-100N Pre-calibrated Navigation Handle

3010-10-200N Manual-calibrated Navigation Handle



Brainlab Instruments

55830-20A	Instrument Star Unit (Pre-calibrated)
55830-27	Instrument Star Unit (Pre-calibrated) '4 markers'
55830-25A	Instrument star Unit ML (Calibration with ICM4)
41798	Instrument Adapter Array StarLink
52420A	Bone Fixator 2-Pin X-press
52411A	Reference Array Y-Geometry X-Press

Additionally Required

2839-03-611	11GA 6 in Diamond Tip CONFIDENCE SPINAL CEMENT SYSTEM Needle
	3 mm and 4 mm schanz pins for use with 2-Pin X-press

VIPER MIS Spine System Navigation for use with Brainlab and Medtronic, manual-calibrated (VIUGSB)

Graphic Case

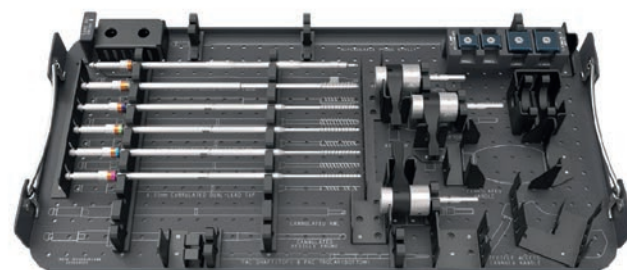
3010-20-400N	Universal Nav VIPER System IGS Alpha Launch Case
3010-20-401N	Universal Nav VIPER System IGS Tray
2797-92-109	EXPEDIUM System Instrument Case Lid



Instruments

Dual-Lead Taps, Cannulated

2867-15-450N	4.35 mm
2867-15-500N	5.0 mm
2867-15-600N	6.0 mm
2867-15-700N	7.0 mm
2867-15-800N	8.0 mm
2797-34-000N	5.5 Universal Quick Connect Poly Driver, 2 ea
2867-60-010N	5.5 X-Tab Polyaxial Driver 10 mm
2867-55-001N	Universal IGS Adaptor, 3ea
2867-55-010N	Universal Clamp Attachment, small, 2ea
2867-55-011N	Universal Clamp Attachment, large, 2 ea
2796-00-120	SLIM-LOC Hex Head Screwdriver



Note: Pre-calibrated instruments are the preferred option for use with the VIPER MIS System and Brainlab Navigation (set VIIGSB).

All surgical techniques are available as PDF files at www.depuyssynthes.com

Not all products are currently available in all markets.

This publication is not intended for distribution outside of the EMEA region.

The third-party trademarks used herein are the trademarks of their respective owners.



Note: For recognized manufacturer, refer to product label.



Manufactured or distributed by:

DePuy Spine, Inc.
325 Paramount Drive
Raynham, MA 02767-0350
USA
Tel: (800) 227-6633

Medos International SARL
Chemin-Blanc 38
2400 Le Locle
Switzerland
Tel: +41 32 934 80 00
Fax: +41 32 934 89 73



DePuy International Ltd
St Anthony's Road
Leeds LS11 8DT
England
Tel: +44 (0)113 270 0461

