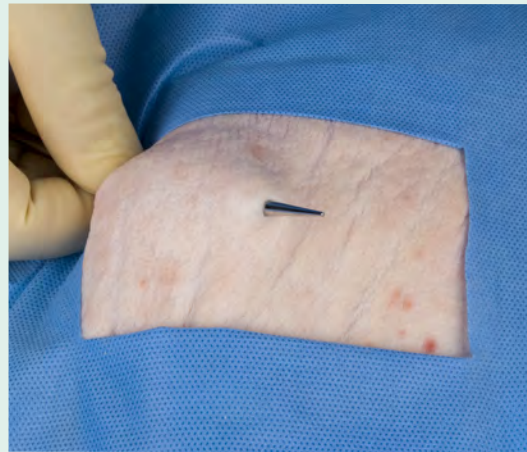


BLAKE®
Silicone Drain
Trocar Guide

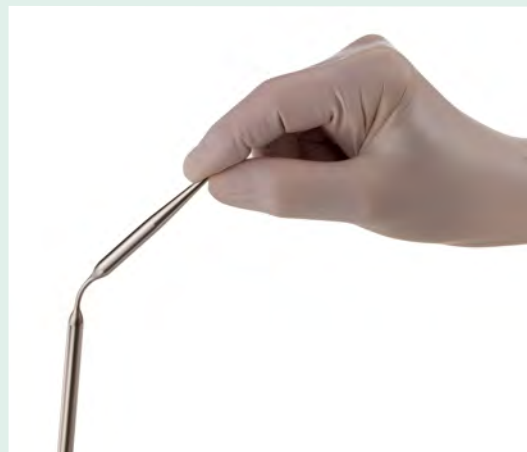
**A versatile portfolio
of bendable,
single-use trocars**

Single-use, Bendable, Available in Blunt or Bladed Tips

For protection, precision, and convenience



Blunt tip helps prevent sharps related injuries¹



Flexible for greater precision and control (blunt tip trocar shown without the protective cap)



Disposable for added convenience and patient safety

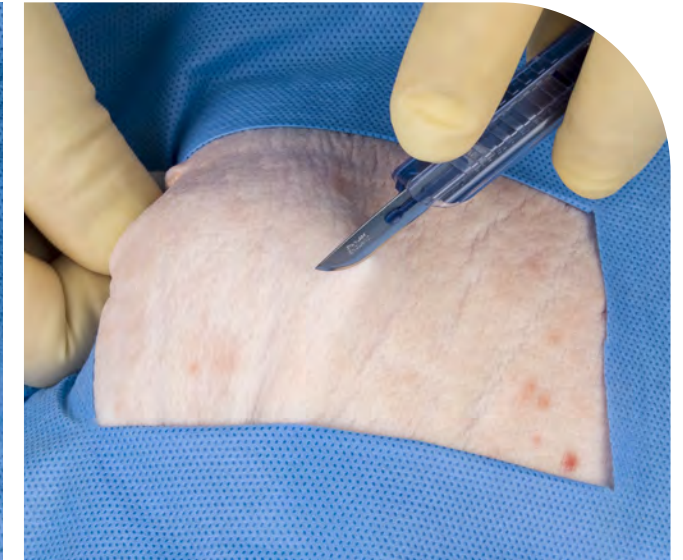
How to Use the BLAKE Drain with a Blunt Tip Trocar



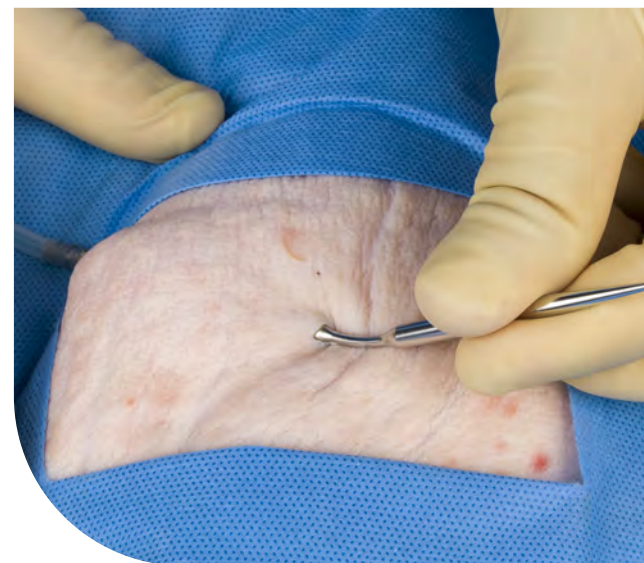
1 If needed, bend the trocar by holding it between both hands and bending in a downward motion until desired angle is achieved. Once the angle has been adjusted, avoid repeated bending as this could result in structural failure.²



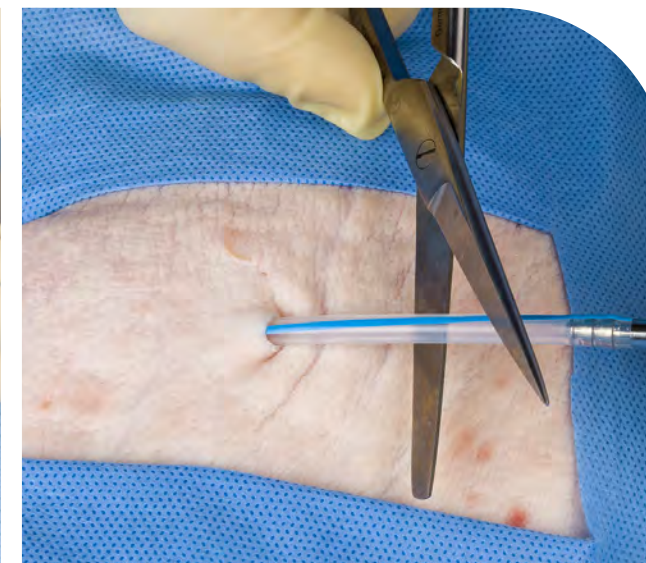
2a After irrigating the wound with sterile fluid and suctioning the irrigating fluid and gross debris from the operative site, insert the trocar. Tube should lie flat and in line with the anticipated skin exit. Ensure that all drain channels lie completely within the wound or cavity to be drained. Deep drainage is best accomplished by using one or more drains for each level of tissue.²



2b With a scalpel, create a stab wound for the drain to come through at the point where the skin has been raised by the trocar.



3 Guide the tip of the trocar through the stab wound made by the scalpel.



4 The drain tubing should be brought out 2 cm to 5 cm from the wound edge for connection to the reservoir. Cut the drain from the trocar.²

For complete indications, contraindications, warnings, precautions, and adverse reactions, please reference full package insert.

Available in commonly used sizes



10 French Drain with 1/8" Sharp Trocar
Code: 2225S



10 French Drain with 1/8" Blunt Trocar
Code: 2241B



15 French Drain with 3/16" Blunt Trocar
Code: 2242B



19 French Drain with 1/4" Blunt Trocar
Code: 2243B

For complete indications, contraindications, warnings, precautions, and adverse reactions, please reference full package insert.

For ordering information, or to learn more, contact your local Ethicon sales professional at 1-877-ETHICON (384-4266) or visit Ethicon.com

References: 1. Ortnor C, et al. Evaluation of performance of two different chest tubes with either a sharp or a blunt tip for thoracostomy in 100 human cadavers. *Scan J of Trauma, Resus and Em Med.* 2012; 20:10. 2. JVAC™ Closed Wound Drainage System Instructions for Use. Ethicon, Inc.

Helpful Hints

Step 1A

To safely remove the blue trocar cap, use a hemostat instrument to separate the cap from the trocar. The instrument should be placed perpendicular to the blue cap and the underlying trocar, then closed gently until you feel the cap loosen from the trocar.

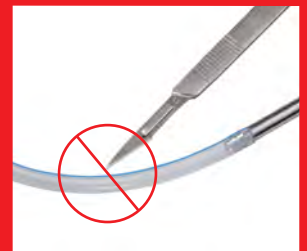


Step 1B

The blue trocar cap can then be removed from the trocar.



- When placing the drain, keep in mind that the suction is greater at the proximal section of the fluted portion of the drain (near the dot mark and the transition zone).
- Special attention is necessary when handling the drain with instruments. The drain may be cut or torn by coming in contact with sharp objects or when subjected to compression or excessive overpressure by a milking roller, etc.²



- Taping or a triple loop suture (around and not through the tubing) will aid in preventing accidental drain displacement.²

