

ATTUNE™ KNEE SYSTEM

Revision Solutions

Rotating Platform



Bringing Patented Technologies to a Seamless System, from Primary through Distal Femoral Replacement

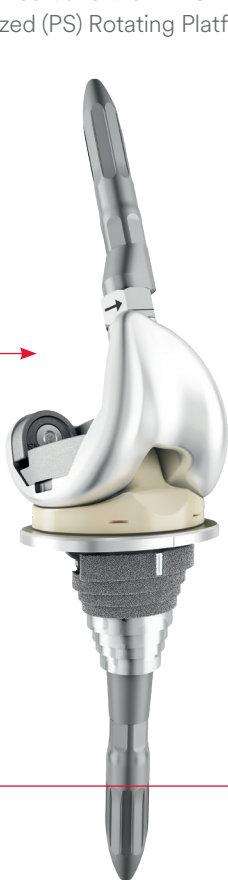
The ATTUNE™ Revision Rotating Platform Knee System is a comprehensive system that is designed to enable you to effectively manage a broad range of complex primary and revision knee procedures.



ATTUNE Primary Knee System

Breakthrough discoveries and proprietary technologies, clinically designed to address patient needs for stability and motion¹

The Revision Femoral Component is compatible with the ATTUNE Revision Rotating Platform Tibial Insert and the ATTUNE Posterior Stabilized (PS) Rotating Platform Insert.



ATTUNE

Revision Rotating Platform Knee System

Comprehensive range of solutions that are designed to address the main challenges presented in complex primary and revision surgery: fixation², instability², and OR efficiency¹¹

Addressing Fixation and Patient Fit





Bone Defect Compensation

Tibial and Femoral Metaphyseal Sleeves feature a stepped design to compensate for substantial bone defects, compressively load the bone and provide a solid foundation for implant fixation.

360° Offset Capability

Offset options of 2, 4, and 6 mm with orientation available from 0° to 360° are designed to increase patient fit in femoral anatomical variations, as well as adjustment for soft-tissue deficiencies.

Rotational Freedom

The ATTUNE Revision Cam/Spine interface is designed to provide +/- 1.25° varus/valgus constraint while allowing internal/external rotational freedom through the Rotating Platform (RP) design during the full range of motion.

Improved Stem Geometry

The Press-Fit Stems are designed to provide rotational stability and create a balance between stiffness and flexibility to reduce stress associated with end-of-stem pain compared to prior designs supported in this study.³

Closing The Flexion Gap

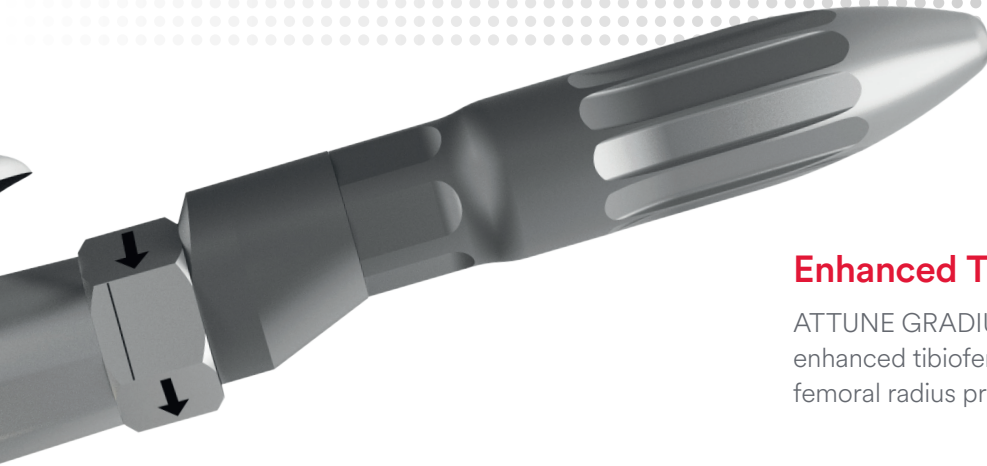
The ATTUNE Revision Femoral Boss is designed to best fit a patient's natural anatomy through optimal placement in terms of flexion gap balance, bone coverage and valgus angle. The ATTUNE Revision Femoral Component has 1 mm additional posterior thickness, the same as the ATTUNE PS Femoral Component, to help close the flexion gap.

Reducing Instability through Improved Kinematics

Femoral-to-Insert Size Matching

The Rotating Platform technology was developed to enable the Femoral Component and Tibial Insert to match size-to-size every time, allowing for optimization of the tibiofemoral contact mechanics and stability throughout the range of motion. Additionally, it is designed to accommodate 2-up and 2-down sizing between the Tibial Insert and Tibial Base.^{4,5,6}





Enhanced Tibiofemoral Conformity

ATTUNE GRADIUS™ Curve technology is designed to allow for enhanced tibiofemoral conformity where the gradually reducing femoral radius provides a smooth transition through the gait cycle.^{4,5,7}

Femoral Offset

360° offset capability with 2, 4, and 6 mm options on the Femoral Component developed to enable balancing the flexion gap while providing fixation and improved patient fit.

Tibio-femoral Sagittal Conformity (Conformity Ratio - $R_{\text{femoral}}/R_{\text{insert}}$)⁷

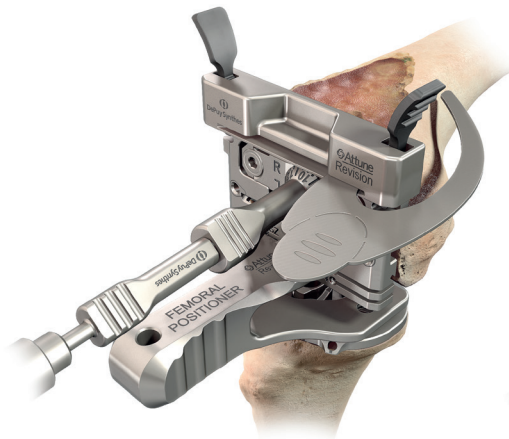
	0°	30°	60°	90°	120°
ATTUNE Revision Femoral Component with ATTUNE Revision RP Tibial Insert	0.99	0.81	0.66	0.45	0.38
ATTUNE Revision Femoral Component with ATTUNE Primary PS RP Tibial Insert	0.99	0.81	0.66	0.45	0.38
SIGMA™ TC3 Femoral Component with TC3 RP Tibial Insert	0.99	0.99	0.61	0.61	0.61
SIGMA TC3 Femoral Component with Primary PS RP Tibial Insert	0.99	0.99	0.61	0.61	0.61
ATTUNE Primary PS Femoral Component with ATTUNE Primary PS RP Tibial Insert	0.99	0.81	0.66	0.45	0.38

OR Efficiency with **Streamlined Workflows**



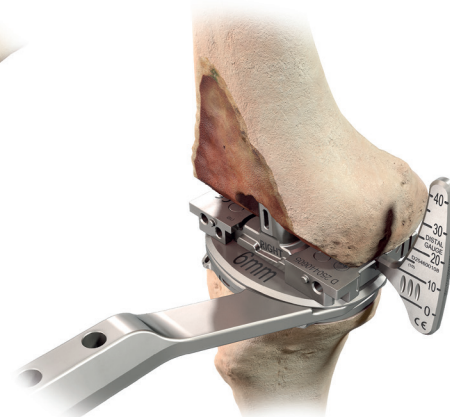
Cut Through Trials

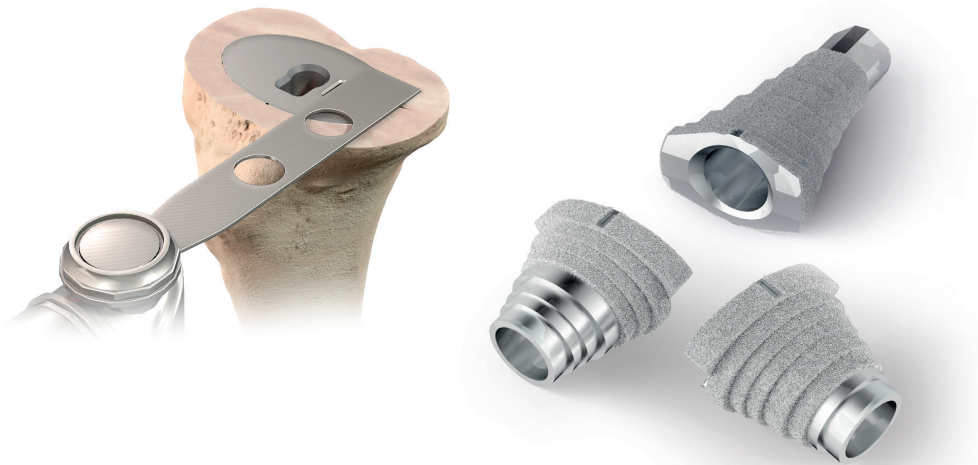
Cut Through Trials are designed to allow for efficiently setting rotation and balancing flexion and extension gaps in real-time. Cut Through Trials also have the ability to make Femoral Augment and Box resections and assemble the Augment and Box Trials without being removed.



Real-time Gap Assessment with Conventional Cut Guide

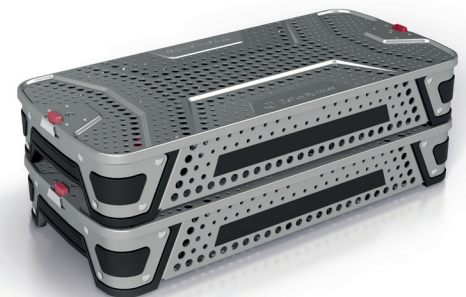
Conventional Cut Guides allow for assessing the anterior resection level, flexion gap, and M/L fit simultaneously by fine-tuning the femoral offset position in 360°. Additionally, Conventional Cut Guides replicate the distal thickness of the femoral implant, enabling assessment of extension gap before making bone resections.





Consistent Sleeve Preparation

Ream, broach, cut. Consistent Sleeve preparation promotes surgical technique efficiency. Both the Tibial and Femoral Sleeves are available in three options, cemented as well as Partially and Fully POROCOAT™ Porous Coated options. Additionally, each Femoral Sleeve distalizes the joint line by 4 mm, matching the size increments of the Femoral Distal Augments.

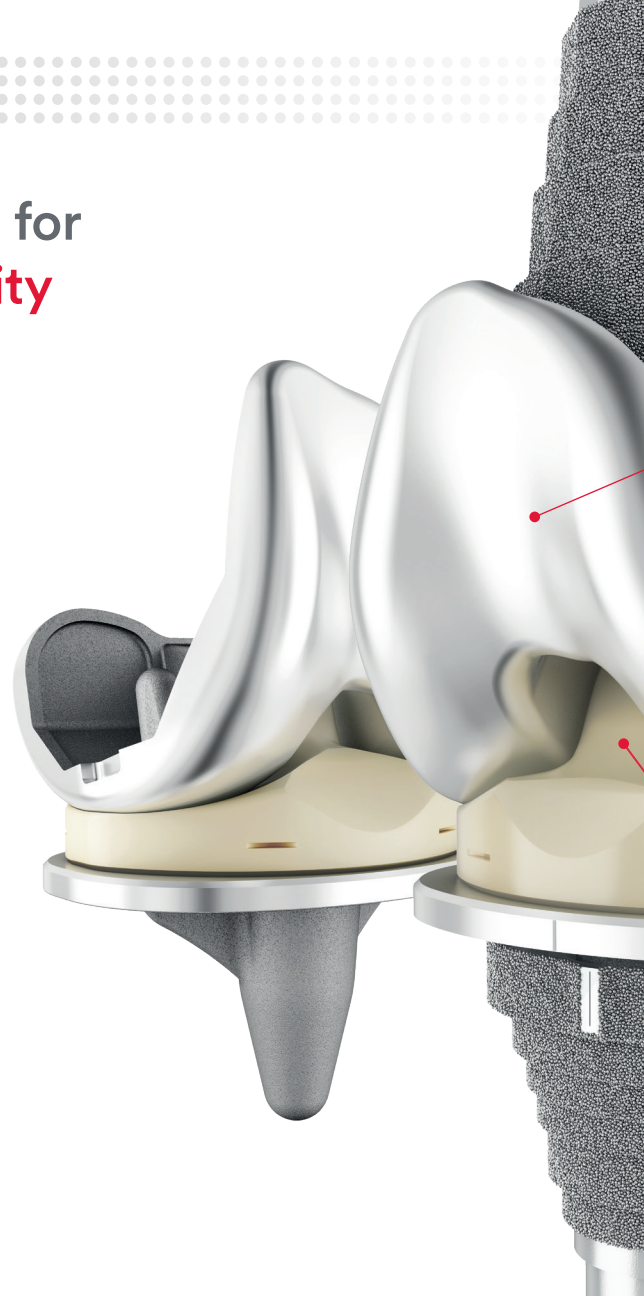


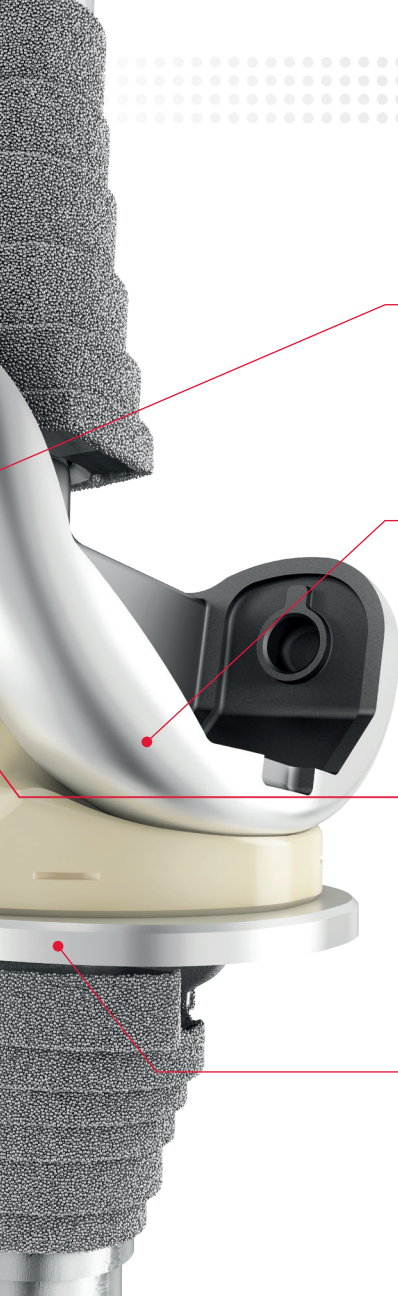
Smart Kitting

Instrumentation kitted for streamlined surgical workflows while enabling management of a broad range of complex primary and revision knee procedures.

Continuing to Balance the Patient Need for Freedom of Movement and Joint Stability

The ATTUNE Knee System is designed to provide patients with STABILITY IN MOTION™, offering a comprehensive range of implant solutions that address overall patient satisfaction. In a large multi-center study, the ATTUNE Primary Knee System demonstrated improved outcomes across a broad range of Patient Reported Outcome Measures (PROMs) compared to certain existing knee brands at one year minimum follow-up.¹ The same technologies that have helped deliver these outcomes in primary are also incorporated in the ATTUNE Revision System. These features are designed to help address patients who are not satisfied after knee revision surgery, which ranges from 27% to 38%.⁸





GLIDERIGHT™ Articulation

The **GLIDERIGHT™ Articulation** encompasses a trochlear groove designed to accommodate patient variation and soft tissue interaction, and patella components designed to optimize patella tracking while maintaining bone coverage.⁹

ATTUNE GRADIUS™ Curve

The patented **ATTUNE GRADIUS™ Curve** is a gradually reducing femoral radius designed to provide a smooth transition from stability to rotational freedom through a patient's range of motion.^{4,5,7}

SOFCAM™ Contact

The Revision Tibial Inserts and Revision Femoral Component have taken into account the advantages of **SOFCAM™ Contact** while considering the requirements for constraint in the Revision Construct throughout the range of motion. The AP kinematics for the Revision Femoral Component on the Revision Rotating Platform Insert are the same as the Revision Femoral Component on the Primary PS RP Insert.¹⁰ The controlled engagement of the Cam to the Insert Spine provides a smooth transition in tibio-femoral conformity through a patient's range of motion.

Rotating Platform and Sleeves

The ATTUNE Revision Rotating Platform Tibial Base and Sleeve technologies have been designed based on the successful clinical heritage of the legacy DePuy Synthes SIGMA TC3 RP and M.B.T. Revision Knee Systems.

References:

1. Hamilton, W.G., Brenkel, I., Gibbon, A., Kantor, S., Clatworthy, M., Dwyer, K., Himden, S., Lesko, J. Early outcomes with a new primary total knee arthroplasty (TKA) system vs. contemporary TKA: Interim results of two worldwide, multi-center prospective studies. American Academy of Orthopaedic Surgeons, Poster 106. Study comparators included the SIGMA Knee (89%), Triathlon™ (7%), NexGen® (3%), and Other (1%). (2017).
2. Schroer, W.C., Berend, K.R., Lombardi, A.V., Barnes, C.L., Bolognesi, M.P., Berend, M.E., Ritter, M.A., Nunley, R.M. Why are total knees failing today? Etiology of total knee revision in 2010 and 2011. *The Journal of Arthroplasty*, 28 Suppl. 2013. 1: 116-119.
3. Leszko F., Gohsh, U., Heldreth, M., Barrett, D. The Effects of Different Revision TKA Stem Design on Bone Stress Distribution: FEA Comparative Study. *7th World Congress of Biomechanics*, Poster F143. (2014).
4. Clary, C.W., Fitzpatrick, C.K., Maletsky, L.P., Rullkoetter, P.J. Improving dynamic mid-stance stability: an experimental and finite element study. *ORS Annual Meeting*, Poster #1044. (2012a, February)
5. Clary, C.W., Fitzpatrick, C.K., Maletsky, L.P., Rullkoetter, P.J. The influence of total knee arthroplasty geometry on mid-flexion stability: an experimental and finite element study. *Journal of Biomechanics*. (2013). 46:1351-1357.
6. Fitzpatrick, C.K., Clary, C.W., Rullkoetter, P.J. Post-cam engagement during dynamic activity with current posterior-stabilized TKR. *18th Congress of the European Society of Biomechanics (ESB)*. (2012a). 1700: 29.
7. Fitzpatrick, C.K., Clary, C.W., Rullkoetter, P.J. The influence of design on TKR mechanics during activities of daily living. *ORS Annual Meeting*, Poster #2034. (2012b, February).
8. Greidanus, N.V., Peterson, R.C., Masri, B.A., Garbuz, D.S. Quality of life outcomes in revision versus primary total knee arthroplasty. *The Journal of Arthroplasty*. (2011). 26(4): 615-620.
9. Clary, C.W., Wright, A.P., Komosa, M.C., Maletsky, L.P. The effect of patella medialization on patellofemoral kinematics after total knee replacement. *18th Congress of the European Society of Biomechanics (ESB)*. (2012b). 29: 1262.
10. Shalhoub, S., Fitzwater, F., Dickinson, M., Clary, C.W., Maletsky, L.P. Quantifying the change in tibiofemoral kinematics between primary and revision total knee arthroplasty inserts. *International Society for Technology in Arthroplasty (ISTA) Annual Meeting*. (2016).
11. Tokarski, Anthony T., et al. "Medicare fails to compensate additional surgical time and effort associated with revision arthroplasty." *The Journal of Arthroplasty*, 30.4 (2015): 535-538.

The third-party trademarks used herein are the trademarks of their respective owners.

Please refer to the instructions for use for a complete list of indications, contraindications, warnings and precautions.



DePuy Orthopaedics, Inc.
700 Orthopaedic Drive
Warsaw, IN 46582
USA
Tel: +1 (800) 366-8143
Fax: +1 (800) 669-2530

DePuy International, Ltd.
St Anthony's Road
Leeds LS11 8DT
England
Tel: +44 (0) 113 270 0461

DePuy (Ireland)
Loughbeg, Ringaskiddy
Co. Cork, Ireland
Tel: +35 (321) 491 4000
Fax: +35 (321) 491 4199

www.depuyssynthes.com

© DePuy Synthes 2017, 2018, 2022. All rights reserved.
092872-220720 DSUS/EMEA