

TELIGEN™

System

See More.

Achieve More.

“The combination of the TELIGEN™ System and the VueLIF™ Procedure has the potential to completely transform the field of minimally invasive spinal surgery.”

“By utilizing the TELIGEN™ System, surgeons will have the opportunity to achieve a significantly broader visual field. This heightened visibility has the potential to substantially improve surgical accuracy, resulting in superior patient outcomes with a smaller incision size and minimal tissue disruption.”



Michael Y Wang,
MD FACS

Minimally Invasive VueLIF™ Procedure using the TELIGEN™ System

Michael Y Wang, MD FACS

Professor, Neurological Surgery & Rehab Medicine; Spine Fellowship Director, Chief of Neurosurgery, Univ. of Miami Hospital

Sasha Vaziri, MD MPH

Neurosurgery and Spine Specialists, Sarasota FL

Patient History:

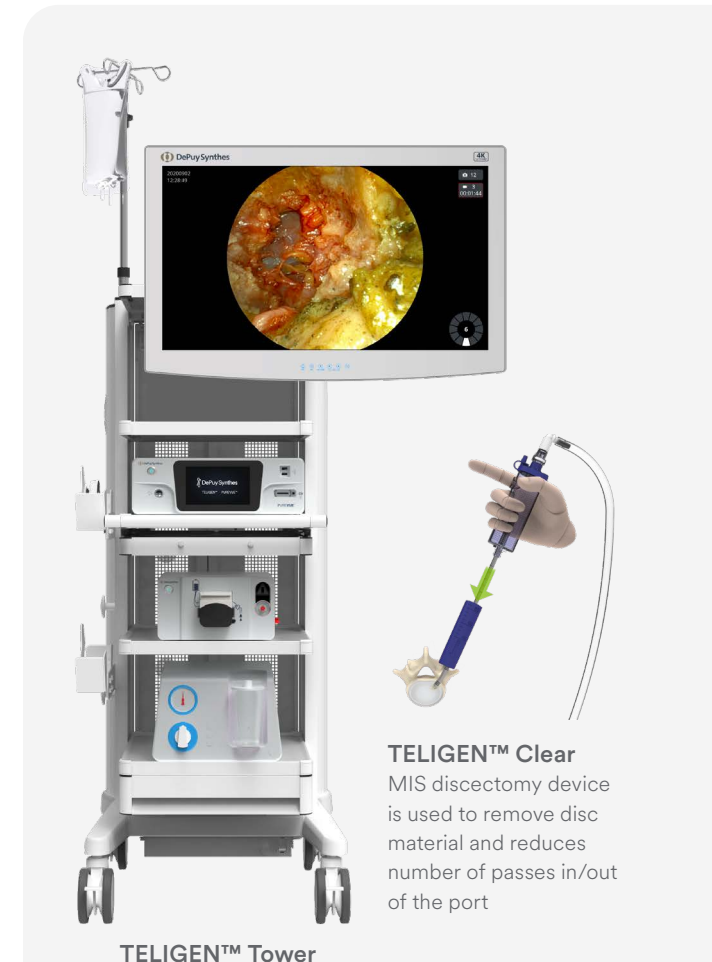
- 73-year-old female
- Severe and worsening low back pain, left lower extremity numbness, and radiculopathy
- Failed multiple rounds of conservative management including epidural steroid injections, physical therapy, and medications
- Imaging revealed L4/L5 spondylolisthesis and a left sided synovial cyst
- Diagnosis: Lumbar spondylolisthesis and radiculopathy

Surgical Intervention: Left L4/L5 VueLIF™ Procedure utilizing the TELIGEN™ System

- Patient mounted TELIGEN™ tubular access system using a minimally invasive transforaminal lumbar interbody fusion (MIS-TLIF) approach
- TELIGEN™ Clear – an MIS discectomy device
- VIPER PRIME™ Screws and CONCORDE™ Bullet Interbody Cage

Outcomes:

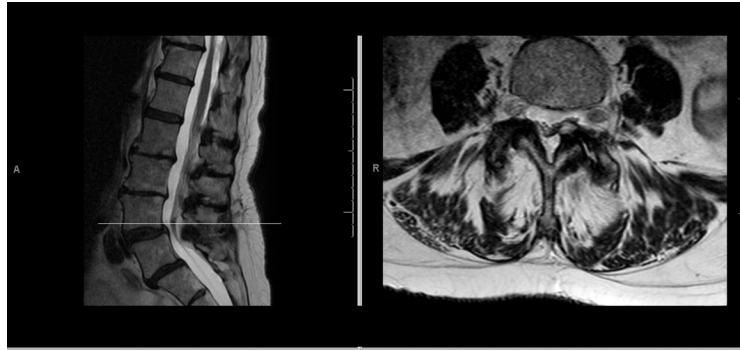
- Patient did well, stayed 1 night in the hospital
- Reported as pain free at 6-week post-op visit



Pre-Op Images:



Pre-operative standing film plain x-rays demonstrating mobile spondylolisthesis



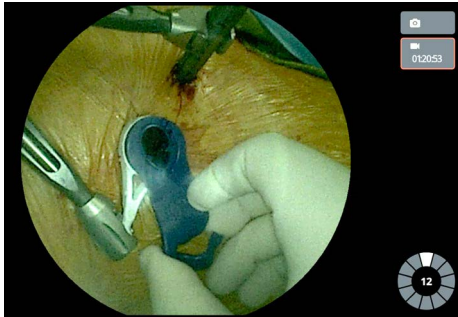
Pre-operative MRI demonstrating left sided synovial cyst and spondylolisthesis at lumbar 4, lumbar 5.

Post-Op Image:

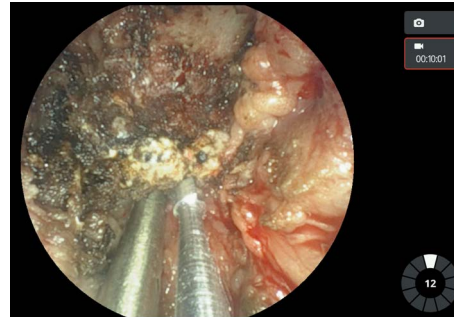


Post-operative AP and lateral view x-rays

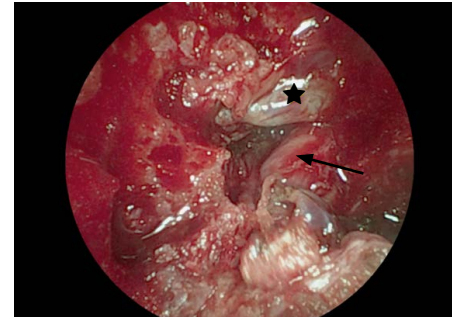
Intra-Op Images using the TELIGEN™ Camera System:



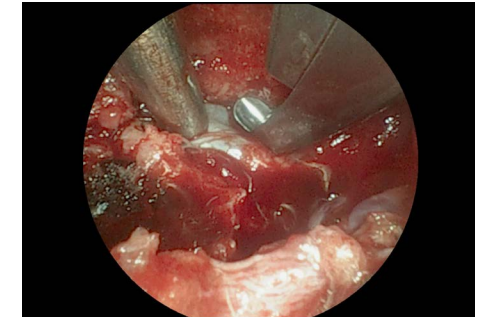
Patient mounted TELIGEN™ tubular access system. Port is mounted to a VIPER PRIME™ pedicle screw.



A standard drill is being used to remove a facet through the TELIGEN™ 15mm port. Camera is located at distal end of port which reduces visual interference from surgical instruments vs traditional methods (i.e., surgical microscope, loupes).



View of Kambin's Triangle with the thecal sac (star) and exiting nerve root (arrow)



Central decompression performed with the thecal sac visualized below the Kerrison

Dr. Michael Y Wang is presenting on behalf of DePuy Synthes Spine. His presentation reflects the opinions of the individual presenter, and the steps described may not encompass the complete steps of the procedure. Additionally, other surgeons may prefer different techniques, approaches, etc., as individual surgeon experience in his clinical practice, as well as patient needs, may dictate variation in procedure steps. Accordingly, results from any case studies reported in this presentation may not be predictive of results in other cases. Before using any medical device, review all labeling, including without limitation; the Instructions For Use (IFU), and relevant package inserts with particular attention to the indications, contraindications, warnings and precautions, and steps for use of the device(s).

Dr. Sasha Yaziri is presenting on behalf of DePuy Synthes Spine. His presentation reflects the opinions of the individual presenter, and the steps described may not encompass the complete steps of the procedure. Additionally, other surgeons may prefer different techniques, approaches, etc., as individual surgeon experience in his clinical practice, as well as patient needs, may dictate variation in procedure steps. Accordingly, results from any case studies reported in this presentation may not be predictive of results in other cases. Before using any medical device, review all labeling, including without limitation; the Instructions For Use (IFU), and relevant package inserts with particular attention to the indications, contraindications, warnings and precautions, and steps for use of the device(s).