

# SURGICEL® Powder Absorbable Haemostat

## Optimised Device Performance Quick Guide



### Product Overview

#### Key Features<sup>1</sup>

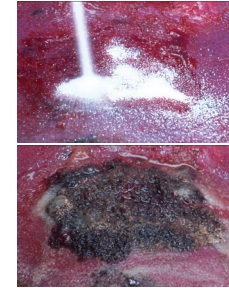
SURGICEL Powder is made from the same raw material as SURGICEL® Original Absorbable Haemostat, by grinding ORC fabric into fiber fragments. SURGICEL Powder is used adjunctively in surgical procedures to assist in the control of capillary, venous, and small arterial hemorrhage when ligation or other conventional methods of control are impractical or ineffective.

- Ready to use out of the package
- Stored at room temperature (15-30°C/59-86°F)



#### Mechanism of Action<sup>1</sup>

- After SURGICEL Powder has been saturated with blood, it swells into a brownish gelatinous mass, providing a surface for platelet adhesion and aggregation, which aids in the formation of a clot
- SURGICEL Powder is bactericidal in vitro against a wide range of bacteria due to low-pH characteristics



### Application

#### Using the Open Applicator

##### Step 1

Using sterile technique, open outer foil pouch and transfer SURGICEL Powder delivery device and inner card to sterile field.

##### Step 2

By holding the body of the applicator, remove SURGICEL Powder delivery device from inner card.

##### Step 3

Twist to open.

##### Step 4

SURGICEL Powder is now ready for use. Compress bellows using **light** pressure to apply.

Steps 1 & 2



Step 3



Step 4



#### Using the Endoscopic Applicator

##### Step 1

To remove the open tip, simply pull it away from the device; twist to open.

##### Step 2

Attach the SURGICEL™ Endoscopic Applicator to the SURGICEL Powder Device without pumping the bellows and ensure the connection is secure.

The rigid sheath of the endoscopic applicator allows for one-handed use. ▶

**Note: Do not use the rigid tip without the flexible inner tip in place.** ▶

Sliding off the rigid sheath reveals a completely flexible inner tip that allows for precise product placement. ▶

Step 1



Step 2



### Quick Tips

- If necessary, powder may be held firmly against the tissues until haemostasis is obtained
- Use only as much SURGICEL Powder as is necessary and apply only where needed for hemostasis; although it may be left in situ when necessary, it is advisable to **remove excess powder with irrigation and aspiration once hemostasis is achieved without disturbing the clot**
- Do not disassemble device bellows
- Do not trim the applicator tip
- To prevent clogging, **do not touch the tip to wet surface**
- SURGICEL Powder is not intended for use on dry (non-bleeding) surfaces or for prevention of bleeding.
- In the event of clogging, the tip can be wiped off using dry sterile, surgical gauze to remove the clog. If clog cannot be removed by using dry gauze, use a new SURGICEL Powder delivery device
- **Remove excess powder in the area of drains to prevent clogging**

- Do not inject or place SURGICEL Powder into an open blood vessel; do not use to control hemorrhage from large arteries or veins
- SURGICEL Powder must always be removed after hemostasis is achieved when used in, around, or in proximity to foramina in bone, areas of bony confine, the spinal cord, or the optic nerve and chiasm since it could swell and could exert unwanted pressure
- Closing with SURGICEL Powder in a contaminated wound without drainage may lead to complications and should be avoided
- SURGICEL Powder should not be used in conjunction with autologous blood salvage circuits because its fragments may pass through the transfusion filters of blood-scavenging systems
- Precautions should be taken in otorhinolaryngologic surgery to ensure that none of the material is aspirated by the patient
- To view remaining powder in the reservoir or flexible inner tip while using the rigid cannula, partially retract the SURGICEL Powder device and flexible inner tip from the rigid cannula