

## Implant Bespoke Report for:

DePuy

## Attune RP Tibial (All)

Comprising PRIMARY knees implanted up to: 01 November 2022  
NJR Database extract: 31 December 2022

Produced on: 26 January 2023  
Licensed for use until: 26 January 2025

## Contents

Recorded Usage in NJR	2
Patient and Procedure Details	3
Revision and Survivorship	4
Patient Reported Outcomes	11
APPENDICES – Component Lists	16

This report has been produced by the National Joint Registry of England, Wales, Northern Ireland, the Isle of Man and Guernsey (NJR). It summarises usage and outcomes associated with the Attune RP Tibial (All) up to the specified dates. This analysis is based on data collected by the NJR and PROMs data collected by NHS Digital for the components listed in the appendices.

This report is subject to the National Joint Registry Supplier Feedback Terms and Conditions Use. In particular, this analysis must not be released to any third party, unless directly employed by the Supplier, without written permission of the the Healthcare Quality Improvement Partnership, with the exception of submissions to regulatory bodies

**NJR Recorded Usage**

**Implant Usage**

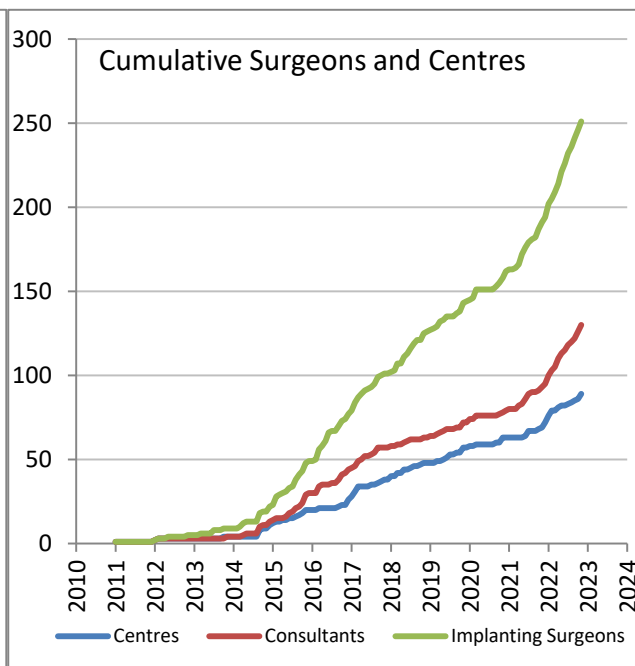
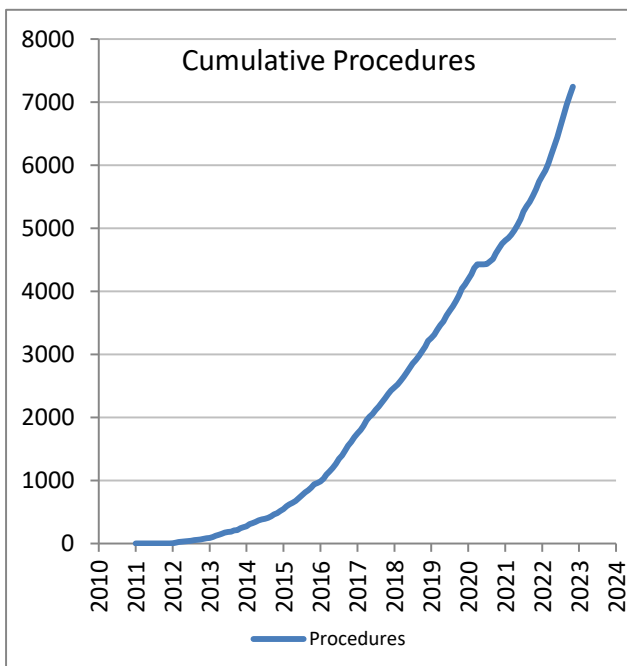
Date of first recorded usage in the NJR: **13 March 2010**

Date of last recorded usage in this dataset: **01 November 2022**

Maximum implantation time: 12.6 years

Mean implantation time: 3.5 years

Totals Recorded in NJR	Cumulative Total
Procedures	7,250
Patients	6,430
Centres	89
Consultants	130
Implanting Surgeons	251



Current Outcome	Year of implantation														Total	%
	Pre-2011	2011	2012	2013	2014	2015	2016	2017	2018	2019	2020	2021	2022			
<b>Death</b>	0	0	17	32	35	54	78	49	51	42	10	8	2	378	5.2%	
<b>Revised</b>	0	0	2	3	10	10	9	11	7	5	4	5	5	71	1.0%	
<b>Unrevised</b>	1	4	65	147	229	375	673	674	721	886	600	1013	1413	6801	93.8%	
<b>Total</b>	1	4	84	182	274	439	760	734	779	933	614	1026	1420	7250	100%	

## Patient / Procedure Details

## Patient Details

	Attune RP Tibial (All)	All other Cemented, Fixed-Bearing
<b>Total Procedures</b>	7,250	1,152,844
<b>Total Patients</b>	6,430	935,569
<b>Demographics</b>		
Mean age	<b>69.7</b>	<b>70.1</b>
< 50	2.0%	1.9%
50 – 59	14.4%	12.4%
60 – 69	32.4%	33.0%
70 – 79	36.9%	38.4%
≥ 80	14.4%	14.4%
Median BMI	<b>30</b>	<b>30</b>
% BMI information available	78.3%	67.5%
Underweight ( BMI < 18.5)	0.2%	0.2%
Normal (18.5 ≤ BMI < 25)	12.0%	10.1%
Overweight (25 ≤ BMI < 30)	36.6%	33.9%
Obese I (30 ≤ BMI < 35)	31.1%	32.4%
Obese II (35 ≤ BMI < 40)	14.4%	16.6%
Obese III (BMI ≥ 40)	5.7%	6.8%
% Male	43.9%	42.7%
<b>ASA Grades</b>		
P1 - Fit and healthy	7.9%	9.6%
P2 - Mild disease not incapacitating	74.7%	72.3%
P3 - Incapacitating systemic disease	17.0%	17.8%
P4 / P5	0.3%	0.3%
<b>Indications</b>		
Osteoarthritis	97.74%	97.40%
Rheumatoid Arthritis	1.10%	1.51%
Other Inflammatory Arthropathy	0.81%	0.73%
Previous Trauma	0.48%	0.61%
Avascular Necrosis	0.34%	0.36%
Other	0.18%	0.32%

Total of indications may exceed total number of implants, since more than one indication can be listed per case.

## Revision and Survivorship

## Reasons for Revision

Reasons for revision of primary procedures in which the implant was used.

Reason for Revision	Revised †	Expected Revisions *	p value
Infection	23	31.83	0.13
Progressive Arthritis Remaining	12	8.74	0.236
Aseptic Loosening Femur	6	4.23	0.327
Aseptic Loosening Tibia	11	13.17	0.678
Aseptic Loosening Patella	3	2.28	0.501
Unexplained Pain	0	8.32	<0.001
Stiffness	6	7.91	0.719
Malalignment	0	6.60	0.003
Instability	5	14.74	0.006
Dislocation / Subluxation	3	2.16	0.482
Periprosthetic Fracture	4	3.88	0.799
Wear of Polyethylene Component	1	1.64	1
Lysis - Tibia	1	3.00	0.383
Lysis - Femur	3	1.68	0.238
Component Dissociation	0	0.56	1
Implant Fracture	2	0.45	0.075
Other / Not recorded	7	5.26	0.38
<b>Total Revised</b>	<b>71</b>	<b>91.62</b>	<b>0.032</b>

† multiple reasons may be listed for one revision procedure

\* Based on All Cemented, Fixed-Bearing, adjusted for agegroup, gender, indications and implantation year

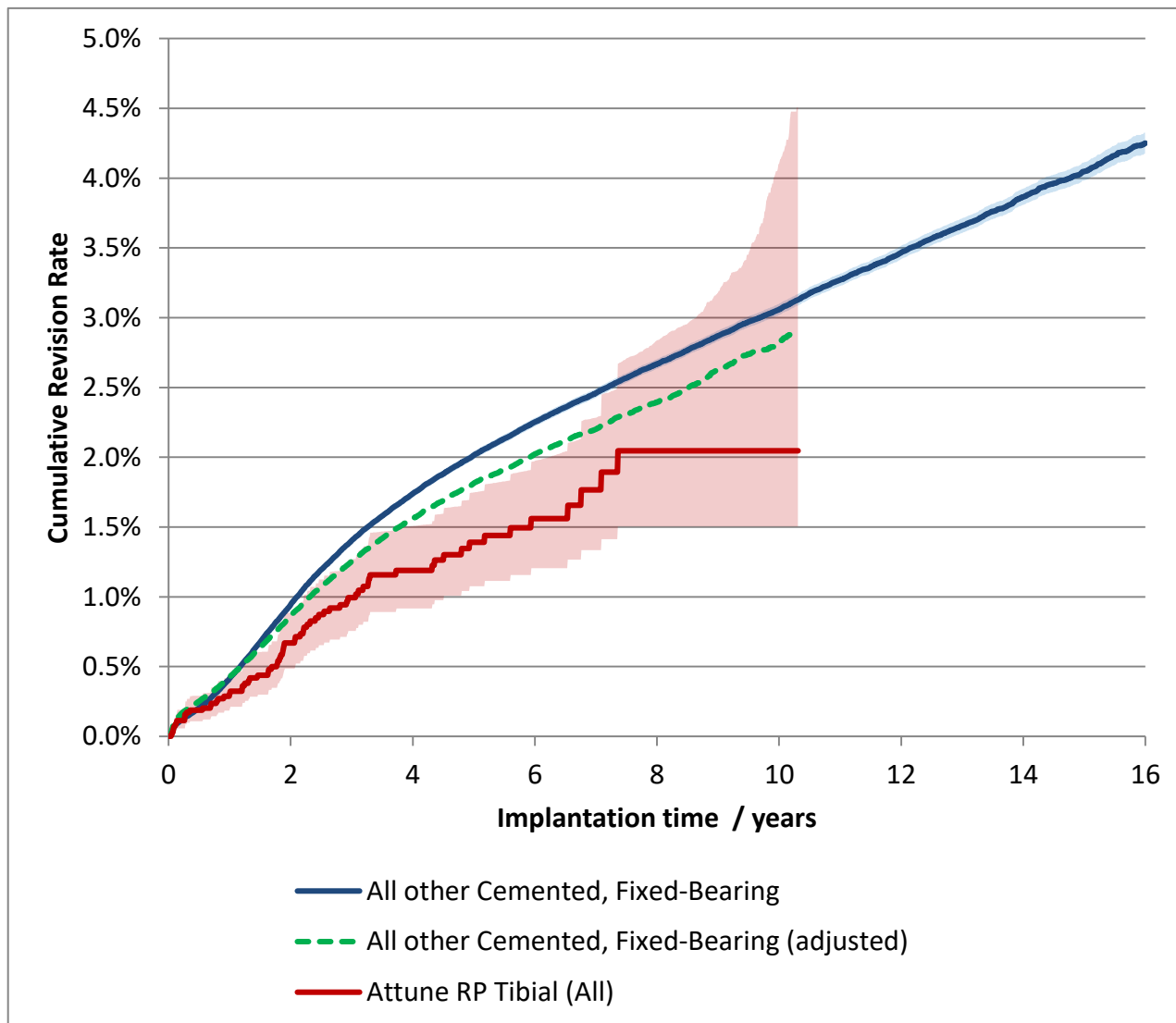
Significantly better,  $p < 0.001$ Significantly better,  $p < 0.05$ Significantly worse  $p < 0.05$ Significantly worse  $p < 0.001$ 

Components Revised	Number of procedures	Attune RP Tibial (All)	All other Cemented, Fixed-Bearing
Femoral and/or Tibial Revision	30	42.3%	67.2%
Isolated bearing exchange	26	36.6%	16.6%
Patella revision / resurfacing only	15	21.1%	15.2%
No component revision recorded	0	0.0%	1.0%

Revision and Survivorship

Cumulative Revision Rate

Endpoint: All reasons for revision



Cox Proportional Hazards model for revision risk ratio of Attune RP Tibial (All) / All other Cemented, Fixed-Bearing, with endpoint as any revision.

Adjustment	Hazard Ratio (95% CI)	p-value
Unadjusted.	0.71 (0.56 - 0.89)	0.003
Adjusted for age, gender, year cohort and indications.	0.77 (0.61 - 0.98)	0.031

## Revision and Survivorship

## Cumulative Revision Rate

Endpoint: All revisions

Period /years	At Risk	Attune RP Tibial (All)	All other Cemented, Fixed-Bearing
0	7250	-	-
1	5568	0.3% (0.2% - 0.4%)	0.4% (0.4% - 0.4%)
2	4574	0.7% (0.5% - 0.9%)	0.9% (0.9% - 1.0%)
3	3874	1.0% (0.8% - 1.3%)	1.4% (1.4% - 1.4%)
4	2927	1.2% (0.9% - 1.5%)	1.7% (1.7% - 1.8%)
5	2162	1.4% (1.1% - 1.7%)	2.0% (2.0% - 2.0%)
6	1418	1.6% (1.2% - 2.0%)	2.3% (2.2% - 2.3%)
7	811	1.8% (1.3% - 2.3%)	2.5% (2.4% - 2.5%)
8	400	2.0% (1.5% - 2.8%)	2.7% (2.6% - 2.7%)
9	194	2.0% (1.5% - 3.2%)	2.9% (2.8% - 2.9%)
10	58	2.0% (1.5% - 4.1%)	3.1% (3.0% - 3.1%)
11		( - )	3.3% (3.2% - 3.3%)
12		( - )	3.5% (3.4% - 3.5%)
13		( - )	3.7% (3.6% - 3.7%)
14		( - )	3.9% (3.8% - 3.9%)
15		( - )	4.0% (4.0% - 4.1%)

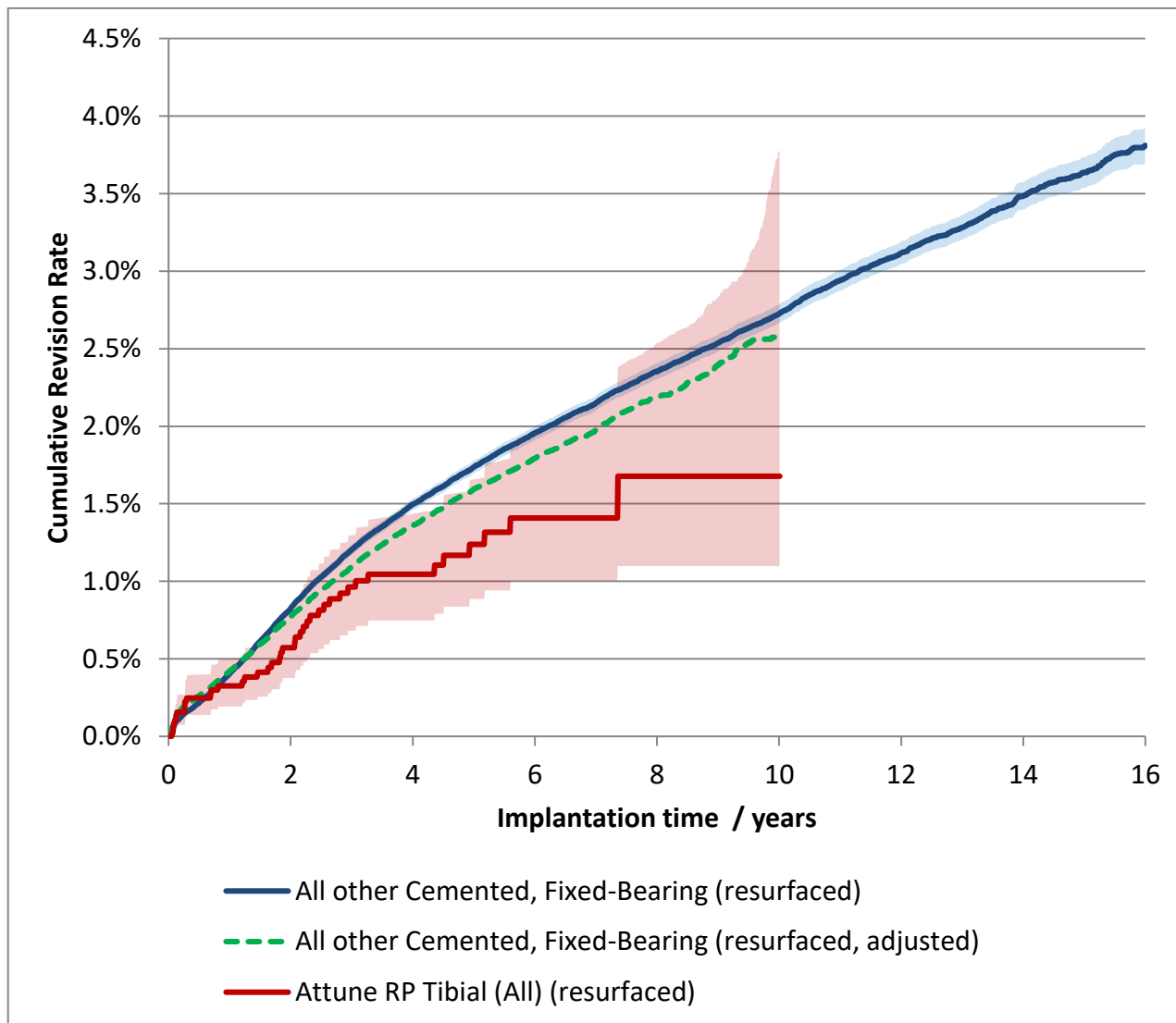
Cumulative revision rate with 95% confidence intervals

Rate is only reported for times where more than 40 remain at risk

**Revision and Survivorship**

**Cumulative Revision Rate**

Patella: Resurfaced



Cox Proportional Hazards model for revision risk ratio of Attune RP Tibial (All) (resurfaced) / All other Cemented, Fixed-Bearing (resurfaced), with endpoint as any revision.

Adjustment	Hazard Ratio (95% CI)	p-value
Unadjusted.	0.72 (0.53 - 0.98)	0.039
Adjusted for age, gender, year cohort and indications.	0.77 (0.57 - 1.05)	0.099

## Revision and Survivorship

## Cumulative Revision Rate

Patella: Resurfaced

Period /years	At Risk	Attune RP Tibial (All) (resurfaced)	All other Cemented, Fixed-Bearing (resurfaced)
0	4597	-	-
1	3645	0.3% (0.2% - 0.5%)	0.4% (0.4% - 0.4%)
2	2991	0.6% (0.4% - 0.8%)	0.8% (0.8% - 0.9%)
3	2520	1.0% (0.7% - 1.3%)	1.2% (1.2% - 1.2%)
4	1864	1.0% (0.7% - 1.4%)	1.5% (1.5% - 1.5%)
5	1345	1.2% (0.9% - 1.7%)	1.7% (1.7% - 1.8%)
6	845	1.4% (1.0% - 1.9%)	2.0% (1.9% - 2.0%)
7	460	1.4% (1.0% - 2.1%)	2.2% (2.1% - 2.2%)
8	244	1.7% (1.1% - 2.5%)	2.4% (2.3% - 2.4%)
9	136	1.7% (1.1% - 2.8%)	2.5% (2.5% - 2.6%)
10	40	1.7% (1.1% - 3.8%)	2.7% (2.7% - 2.8%)
11		( - )	2.9% (2.9% - 3.0%)
12		( - )	3.1% (3.0% - 3.2%)
13		( - )	3.3% (3.2% - 3.4%)
14		( - )	3.5% (3.4% - 3.6%)
15		( - )	3.6% (3.5% - 3.7%)

Cumulative revision rate with 95% confidence intervals

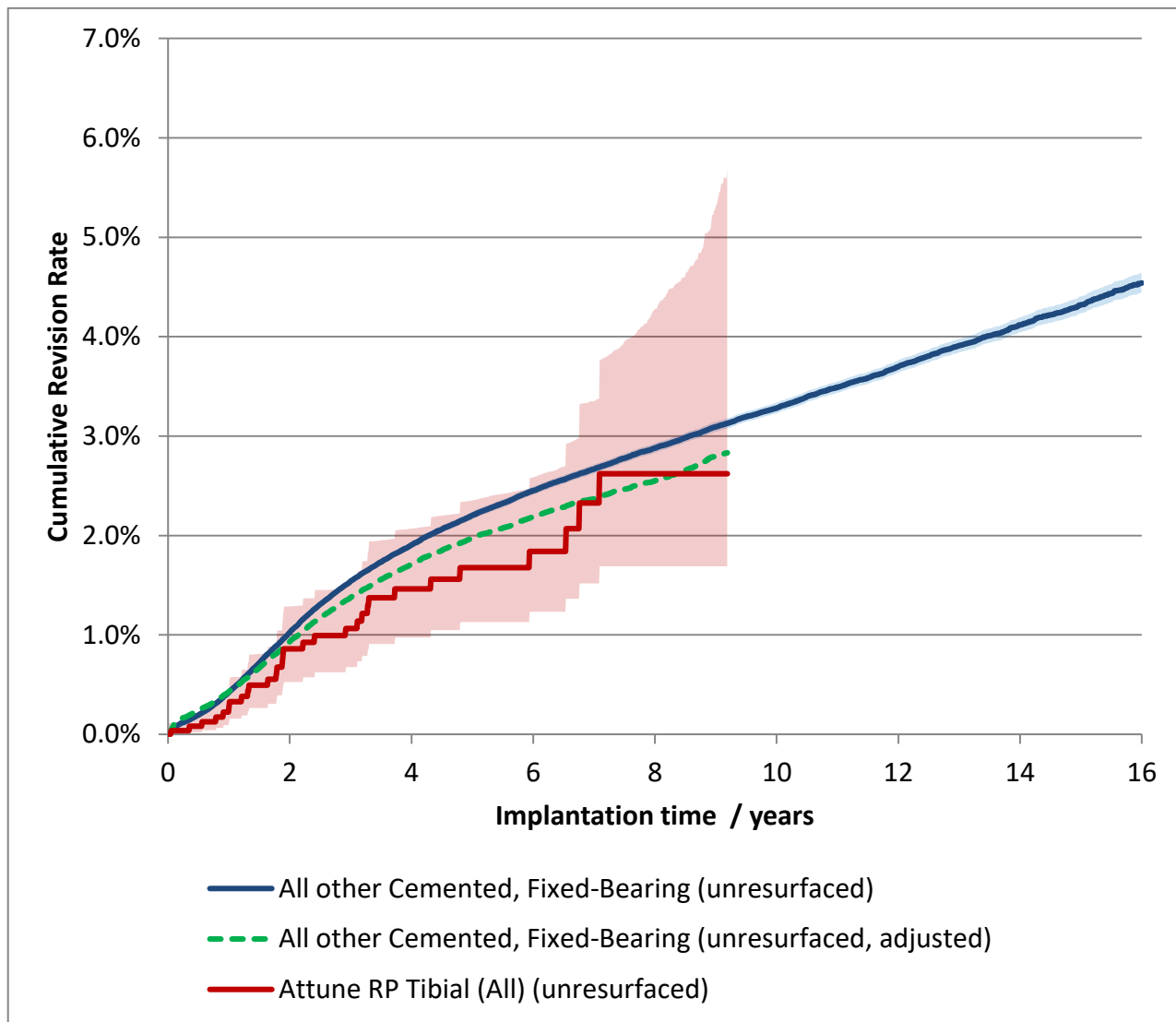
Rate is only reported for times where more than 40 remain at risk



Revision and Survivorship

Cumulative Revision Rate

Patella: Unresurfaced



Cox Proportional Hazards model for revision risk ratio of Attune RP Tibial (All) (unresurfaced) / All other Cemented, Fixed-Bearing (unresurfaced), with endpoint as any revision.

Adjustment	Hazard Ratio (95% CI)	p-value
Unadjusted.	0.78 (0.54 - 1.11)	0.165
Adjusted for age, gender, year cohort and indications.	0.85 (0.60 - 1.22)	0.381

## Revision and Survivorship

## Cumulative Revision Rate

Patella: Unresurfaced

Period /years	At Risk	Attune RP Tibial (All) (unresurfaced)	All other Cemented, Fixed-Bearing (unresurfaced)
0	2653	-	-
1	1923	0.3% (0.1% - 0.5%)	0.4% (0.4% - 0.4%)
2	1583	0.9% (0.5% - 1.3%)	1.0% (1.0% - 1.1%)
3	1354	1.1% (0.7% - 1.5%)	1.5% (1.5% - 1.6%)
4	1063	1.5% (1.0% - 2.1%)	1.9% (1.9% - 1.9%)
5	817	1.7% (1.1% - 2.4%)	2.2% (2.2% - 2.2%)
6	573	1.8% (1.2% - 2.6%)	2.5% (2.4% - 2.5%)
7	351	2.3% (1.5% - 3.4%)	2.7% (2.6% - 2.7%)
8	156	2.6% (1.7% - 4.3%)	2.9% (2.8% - 2.9%)
9	58	2.6% (1.7% - 5.3%)	3.1% (3.0% - 3.1%)
10		( - )	3.3% (3.2% - 3.3%)
11		( - )	3.5% (3.4% - 3.5%)
12		( - )	3.7% (3.6% - 3.8%)
13		( - )	3.9% (3.8% - 4.0%)
14		( - )	4.1% (4.0% - 4.2%)
15		( - )	4.3% (4.2% - 4.4%)

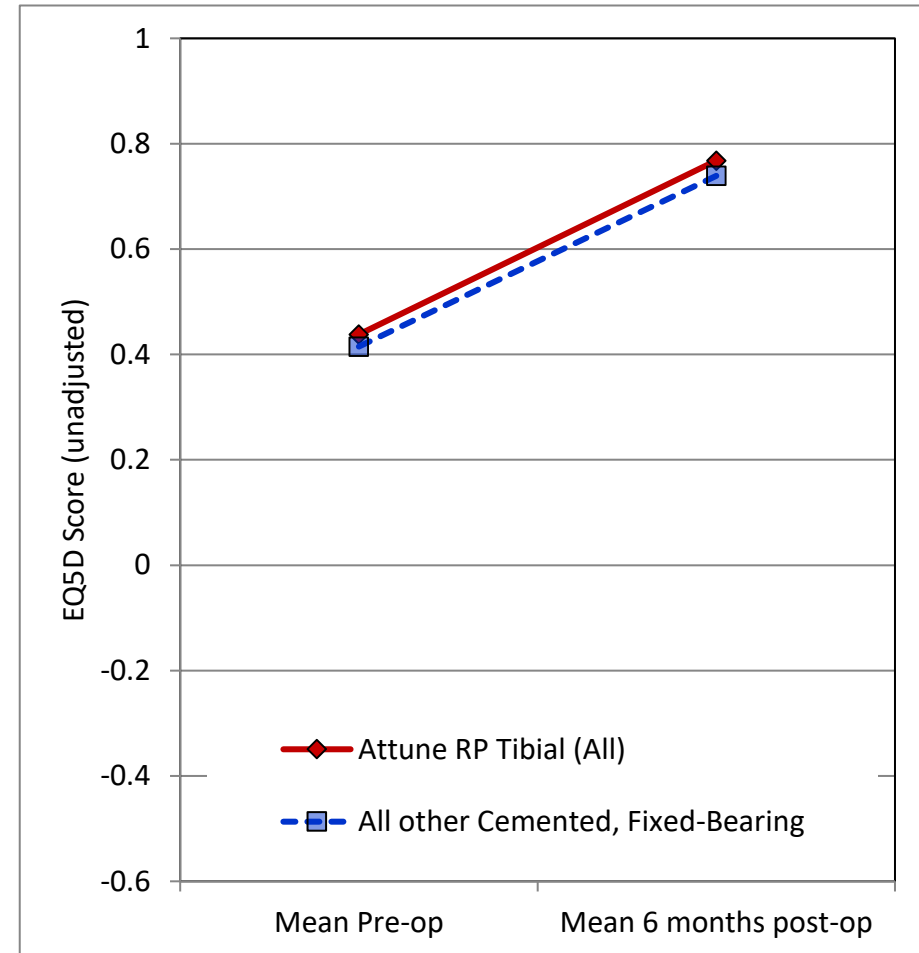
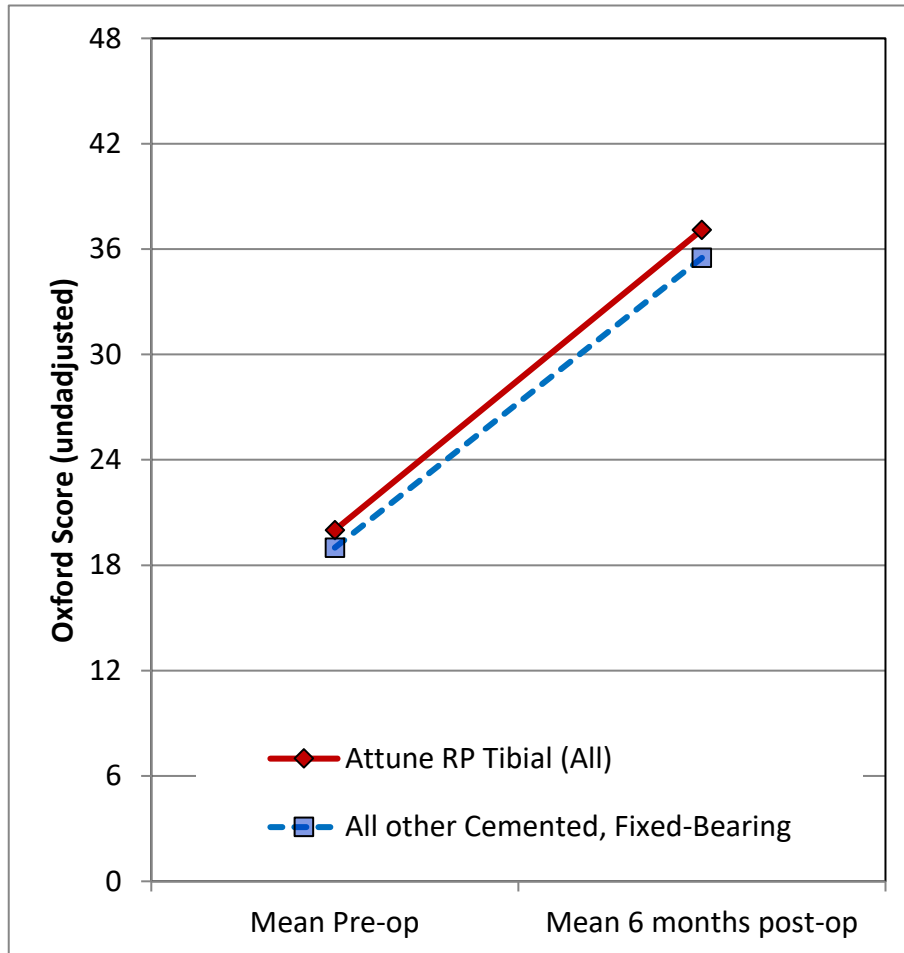
Cumulative revision rate with 95% confidence intervals

Rate is only reported for times where more than 40 remain at risk

## PROMs Analysis

## Patient Reported Outcomes

Comprising PROMs data up to and including: 31/12/2020



## Patient Reported Outcomes

### PROMs Analysis

Comprising PROMs data up to and including: 31/12/2020

Oxford Knee Score (0 - 48)	Attune RP Tibial (All)	All other Cemented, Fixed-Bearing	All Knees in NJR
Paired Records	1,617	318,783	382,034
PreOp score	20.0 (19.6 - 20.4)	19.0 (19.0 - 19.1)	19.1 (19.1 - 19.1)
6 month score	37.1 (36.7 - 37.5)	35.5 (35.4 - 35.5)	35.5 (35.5 - 35.5)
6 month score (adjusted)	36.4 (36.0 - 36.8)	35.5 (35.5 - 35.5)	35.5 (35.5 - 35.5)
Health gain	17.1 (16.6 - 17.6)	16.4 (16.4 - 16.5)	16.4 (16.4 - 16.4)
Health gain (adjusted)	17.3 (16.9 - 17.7)	16.4 (16.4 - 16.4)	16.4 (16.4 - 16.4)
p value (adjusted health gain)	< 0.001		
Score Improved	95.0%	94.0%	93.9%

EQ-5D Index (-0.59 - 1.00)	Attune RP Tibial (All)	All other Cemented, Fixed-Bearing	All Knees in NJR
Paired Records	1,507	295,942	354,535
PreOp score	0.438 (0.423 - 0.453)	0.415 (0.414 - 0.416)	0.417 (0.416 - 0.418)
6 month score	0.768 (0.756 - 0.779)	0.739 (0.738 - 0.740)	0.739 (0.738 - 0.740)
6 month score (adjusted)	0.756 (0.745 - 0.767)	0.739 (0.739 - 0.740)	0.739 (0.738 - 0.740)
Health gain	0.330 (0.313 - 0.346)	0.324 (0.322 - 0.325)	0.322 (0.321 - 0.323)
Health gain (adjusted)	0.339 (0.328 - 0.349)	0.322 (0.321 - 0.323)	0.322 (0.321 - 0.322)
p value (adjusted health gain)	0.026		
Score Improved	82.0%	81.5%	81.4%

EQ-VAS (0 - 100)	Attune RP Tibial (All)	All other Cemented, Fixed-Bearing	All Knees in NJR
Paired Records	1,469	283,571	340,143
PreOp score	67.8 (66.8 - 68.9)	67.9 (67.8 - 68.0)	68.0 (67.9 - 68.1)
6 month score	75.7 (74.8 - 76.6)	74.1 (74.1 - 74.2)	74.1 (74.1 - 74.2)
6 month score (adjusted)	75.0 (74.2 - 75.8)	74.2 (74.1 - 74.2)	74.1 (74.1 - 74.2)
Health gain	7.9 (6.8 - 9.0)	6.2 (6.2 - 6.3)	6.2 (6.1 - 6.2)
Health gain (adjusted)	7.0 (6.2 - 7.8)	6.2 (6.1 - 6.3)	6.2 (6.1 - 6.2)
p value (adjusted health gain)	0.057		
Score Improved	59.8%	56.6%	56.4%

Adjusted scores correspond to the NHS Digital version 3 casemix-adjustment model. This includes patient variables from PROMs, HES, and IMD data.

Figures in parentheses represent the 95% confidence interval for the mean

Bespoke Report for:

Attune RP Tibial (All)

Responses are not case mix adjusted

**Patient Reported Outcomes**



## Patient Reported Outcomes

### Success

Response	Attune RP Tibial (All)	All other Cemented, Fixed-Bearing
Much better	1311	242099
A little better	262	52076
About the same	68	14495
A little worse	38	11131
Much worse	28	7317

Answer to 6-months general health question:

"Overall, how are your problems now, compared to before your operation?"

### Satisfaction

Response	Attune RP Tibial (All)	All other Cemented, Fixed-Bearing
Excellent	552	84938
Very Good	613	117038
Good	342	78612
Fair	158	35426
Poor	34	10447

Answer to 6-months general health question:

"How would you describe the results of your operation?"

## Disclaimer

### Disclaimer

The data used for this analysis was obtained from the National Joint Registry ("NJR"), part of the Healthcare Quality Improvement Partnership ("HQIP"). HQIP, the NJR and/or its contractor, NEC Software Solutions (UK) Limited ("NEC") take no responsibility (except as prohibited by law) for the accuracy, currency, reliability and correctness of any data used or referred to in this report, nor for the accuracy, currency, reliability and correctness of links or references to other information sources and disclaims all warranties in relation to such data, links and references to the maximum extent permitted by legislation including any duty of care to third party readers of the data analysis.

To the maximum extent permitted by law, neither the NJR or NEC shall have any liability (including but not limited to liability by reason of negligence) for any loss, damage, cost or expense incurred or arising by reason of any person using or relying on the data within this report and whether caused by reason of any error, omission or misrepresentation in the report or otherwise. This report is not to be taken as advice. Third parties using or relying on the data in this report do so at their own risk and will be responsible for making their own assessment and should verify all relevant representations, statements and information with their own professional advisers.





# Appendix A: Component List

Catalogue Number	Description	Number Implanted
150410207	Attune PS Cemented Femoral Size 7 Right	211
150410208	Attune PS Cemented Femoral Size 8 Right	147
150410209	Attune PS Cemented Femoral Size 9 Right	31
150410210	Attune PS Cemented Femoral Size 10 Right	10
150410223	Attune PS Cemented Femoral Size 3 Narrow Right	2
150410224	Attune PS Cemented Femoral Size 4 Narrow Right	16
150410225	Attune PS Cemented Femoral Size 5 Narrow Right	79
150410226	Attune PS Cemented Femoral Size 6 Narrow Right	93
150440104	ATTUNE Revision CRS Femoral Size 4 Left Cemented	1
150440105	ATTUNE Revision CRS Femoral Size 5 Left Cemented	1
150440205	ATTUNE Revision CRS Femoral Size 5 Right Cemented	1
150440206	ATTUNE Revision CRS Femoral Size 6 Right Cemented	1
Tibial Tray		
150610001	Attune RP Cemented Tibial Base Size 1	1
150610002	Attune RP Cemented Tibial Base Size 2	2
150610003	Attune RP Cemented Tibial Base Size 3	228
150610004	Attune RP Cemented Tibial Base Size 4	692
150610005	Attune RP Cemented Tibial Base Size 5	795
150610006	Attune RP Cemented Tibial Base Size 6	587
150610007	Attune RP Cemented Tibial Base Size 7	623
150610008	Attune RP Cemented Tibial Base Size 8	488
150610009	Attune RP Cemented Tibial Base Size 9	93
150610010	Attune RP Cemented Tibial Base Size 10	24
150680001	ATTUNE RP POCKET BASE SZ1 CEM	1
150680002	ATTUNE RP POCKET BASE SZ2 CEM	6
150680003	ATTUNE RP POCKET BASE SZ3 CEM	307
150680004	ATTUNE RP POCKET BASE SZ4 CEM	713
150680005	ATTUNE RP POCKET BASE SZ5 CEM	829
150680006	ATTUNE RP POCKET BASE SZ6 CEM	554
150680007	ATTUNE RP POCKET BASE SZ7 CEM	628
150680008	ATTUNE RP POCKET BASE SZ8 CEM	545
150680009	ATTUNE RP POCKET BASE SZ9 CEM	115
150680010	ATTUNE RP POCKET BASE SZ10 CEM	19
Meniscal		
151620305	Attune CR FB Insert Size 3 5mm	1
151620406	Attune CR FB Insert Size 4 6mm	1
151620507	Attune CR FB Insert Size 5 7mm	2
151620605	Attune CR FB Insert Size 6 5mm	3
151620612	Attune CR FB Insert Size 6 12mm	1
151620705	Attune CR FB Insert Size 7 5mm	1
151630105	Attune CR RP Insert Size 1 5mm	1
151630206	Attune CR RP Insert Size 2 6mm	1
151630305	Attune CR RP Insert Size 3 5mm	50
151630306	Attune CR RP Insert Size 3 6mm	29

# Appendix A: Component List

Catalogue Number	Description	Number Implanted
151630307	Attune CR RP Insert Size 3 7mm	10
151630308	Attune CR RP Insert Size 3 8mm	20
151630310	Attune CR RP Insert Size 3 10mm	7
151630312	Attune CR RP Insert Size 3 12mm	4
151630405	Attune CR RP Insert Size 4 5mm	189
151630406	Attune CR RP Insert Size 4 6mm	158
151630407	Attune CR RP Insert Size 4 7mm	124
151630408	Attune CR RP Insert Size 4 8mm	78
151630410	Attune CR RP Insert Size 4 10mm	35
151630412	Attune CR RP Insert Size 4 12mm	8
151630414	Attune CR RP Insert Size 4 14mm	2
151630505	Attune CR RP Insert Size 5 5mm	364
151630506	Attune CR RP Insert Size 5 6mm	413
151630507	Attune CR RP Insert Size 5 7mm	250
151630508	Attune CR RP Insert Size 5 8mm	154
151630510	Attune CR RP Insert Size 5 10mm	90
151630512	Attune CR RP Insert Size 5 12mm	18
151630514	Attune CR RP Insert Size 5 14mm	6
151630605	Attune CR RP Insert Size 6 5mm	385
151630606	Attune CR RP Insert Size 6 6mm	428
151630607	Attune CR RP Insert Size 6 7mm	262
151630608	Attune CR RP Insert Size 6 8mm	178
151630610	Attune CR RP Insert Size 6 10mm	87
151630612	Attune CR RP Insert Size 6 12mm	19
151630614	Attune CR RP Insert Size 6 14mm	3
151630705	Attune CR RP Insert Size 7 5mm	292
151630706	Attune CR RP Insert Size 7 6mm	313
151630707	Attune CR RP Insert Size 7 7mm	253
151630708	Attune CR RP Insert Size 7 8mm	140
151630710	Attune CR RP Insert Size 7 10mm	63
151630712	Attune CR RP Insert Size 7 12mm	18
151630714	Attune CR RP Insert Size 7 14mm	3
151630805	Attune CR RP Insert Size 8 5mm	244
151630806	Attune CR RP Insert Size 8 6mm	206
151630807	Attune CR RP Insert Size 8 7mm	123
151630808	Attune CR RP Insert Size 8 8mm	93
151630810	Attune CR RP Insert Size 8 10mm	45
151630812	Attune CR RP Insert Size 8 12mm	6
151630905	Attune CR RP Insert Size 9 5mm	47
151630906	Attune CR RP Insert Size 9 6mm	46
151630907	Attune CR RP Insert Size 9 7mm	40
151630908	Attune CR RP Insert Size 9 8mm	28
151630910	Attune CR RP Insert Size 9 10mm	11
151630912	Attune CR RP Insert Size 9 12mm	1
151630914	Attune CR RP Insert Size 9 14mm	1
151631005	Attune CR RP Insert Size 10 5mm	6

# Appendix A: Component List

Catalogue Number	Description	Number Implanted
151631006	Attune CR RP Insert Size 10 6mm	6
151631007	Attune CR RP Insert Size 10 7mm	7
151631008	Attune CR RP Insert Size 10 8mm	3
151631010	Attune CR RP Insert Size 10 10mm	1
151640507	Attune PS FB Insert Size 5 7mm	1
151640906	Attune PS FB Insert Size 9 6mm	1
151650206	Attune PS RP Insert Size 2 6mm	1
151650305	Attune PS RP Insert Size 3 5mm	15
151650306	Attune PS RP Insert Size 3 6mm	20
151650307	Attune PS RP Insert Size 3 7mm	7
151650308	Attune PS RP Insert Size 3 8mm	8
151650310	Attune PS RP Insert Size 3 10mm	3
151650314	Attune PS RP Insert Size 3 14mm	1
151650405	Attune PS RP Insert Size 4 5mm	52
151650406	Attune PS RP Insert Size 4 6mm	65
151650407	Attune PS RP Insert Size 4 7mm	27
151650408	Attune PS RP Insert Size 4 8mm	20
151650410	Attune PS RP Insert Size 4 10mm	9
151650412	Attune PS RP Insert Size 4 12mm	3
151650505	Attune PS RP Insert Size 5 5mm	131
151650506	Attune PS RP Insert Size 5 6mm	152
151650507	Attune PS RP Insert Size 5 7mm	80
151650508	Attune PS RP Insert Size 5 8mm	49
151650510	Attune PS RP Insert Size 5 10mm	19
151650512	Attune PS RP Insert Size 5 12mm	1
151650605	Attune PS RP Insert Size 6 5mm	113
151650606	Attune PS RP Insert Size 6 6mm	157
151650607	Attune PS RP Insert Size 6 7mm	96
151650608	Attune PS RP Insert Size 6 8mm	48
151650610	Attune PS RP Insert Size 6 10mm	18
151650612	Attune PS RP Insert Size 6 12mm	5
151650705	Attune PS RP Insert Size 7 5mm	96
151650706	Attune PS RP Insert Size 7 6mm	165
151650707	Attune PS RP Insert Size 7 7mm	87
151650708	Attune PS RP Insert Size 7 8mm	53
151650710	Attune PS RP Insert Size 7 10mm	15
151650712	Attune PS RP Insert Size 7 12mm	1
151650805	Attune PS RP Insert Size 8 5mm	55
151650806	Attune PS RP Insert Size 8 6mm	90
151650807	Attune PS RP Insert Size 8 7mm	67
151650808	Attune PS RP Insert Size 8 8mm	34
151650810	Attune PS RP Insert Size 8 10mm	15
151650812	Attune PS RP Insert Size 8 12mm	7
151650814	Attune PS RP Insert Size 8 14mm	1
151650905	Attune PS RP Insert Size 9 5mm	19
151650906	Attune PS RP Insert Size 9 6mm	22

# Appendix A: Component List

Catalogue Number	Description	Number Implanted
151650907	Attune PS RP Insert Size 9 7mm	13
151650908	Attune PS RP Insert Size 9 8mm	6
151650910	Attune PS RP Insert Size 9 10mm	2
151651005	Attune PS RP Insert Size 10 5mm	3
151651006	Attune PS RP Insert Size 10 6mm	5
151651007	Attune PS RP Insert Size 10 7mm	2
151651008	Attune PS RP Insert Size 10 8mm	4
151651010	Attune PS RP Insert Size 10 10mm	1
151710406	ATTUNE Revision CRS Rotating Platform Insert Size 4 6mm AOX	1
Patella		
151810029	Attune Medialized Anatomic Patella 29mm	4
151810032	Attune Medialized Anatomic Patella 32mm	50
151810035	Attune Medialized Anatomic Patella 35mm	73
151810038	Attune Medialized Anatomic Patella 38mm	48
151810041	Attune Medialized Anatomic Patella 41mm	18
151820029	Attune Medialized Dome Patella 29mm	30
151820032	Attune Medialized Dome Patella 32mm	336
151820035	Attune Medialized Dome Patella 35mm	1371
151820038	Attune Medialized Dome Patella 38mm	1700
151820041	Attune Medialized Dome Patella 41mm	962
960103	PFC® SIGMA OVAL PATELLA 41mm	1
Femoral Wedge		
151101202	Attune Revision Femoral Sleeve Half Porous M/L30mm	1
Tibial Wedge		
151111102	Attune Revision Tibial Sleeve Half Porous Sleeve 37mm	1
Tib Fem Extension Stem		
151214050	ATTUNE Revision Tibial Stem Cemented 14mm x 50mm	3
151312060	AttuneRevisionPressFitStem12mmx60mm	1
151312110	AttuneRevisionPressFitStem12mmx110mm	1