

REVISION



Implant Summary Report for:

DePuy

Attune Cemented

Comprising REVISION knees implanted up to:
NJR Database extract:

01 November 2022
31 December 2022

Produced on:
Licensed for use until:

14 February 2023
14 February 2024

Contents

Recorded Usage in NJR	2
Patient and Procedure Details	3
Re-Revision and Survivorship	4
Patient Reported Outcomes	7
APPENDICES – Component Lists	12

This report has been produced by the National Joint Registry (NJR). It summarises usage and outcomes associated with use of the Attune Cemented in revision procedures up to the specified dates. This analysis is based on data collected by the NJR and PROMs data collected by NHS Digital for the components listed in the appendices. It excludes procedures known to be second (or subsequent) revisions.

This report is made available to DePuy under licence. Under this licence, DePuy is free to distribute this document, subject to the restrictions specified in the National Joint Registry Supplier Feedback Data Access and Use Code of Practice.

NJR Recorded Usage

Implant Usage

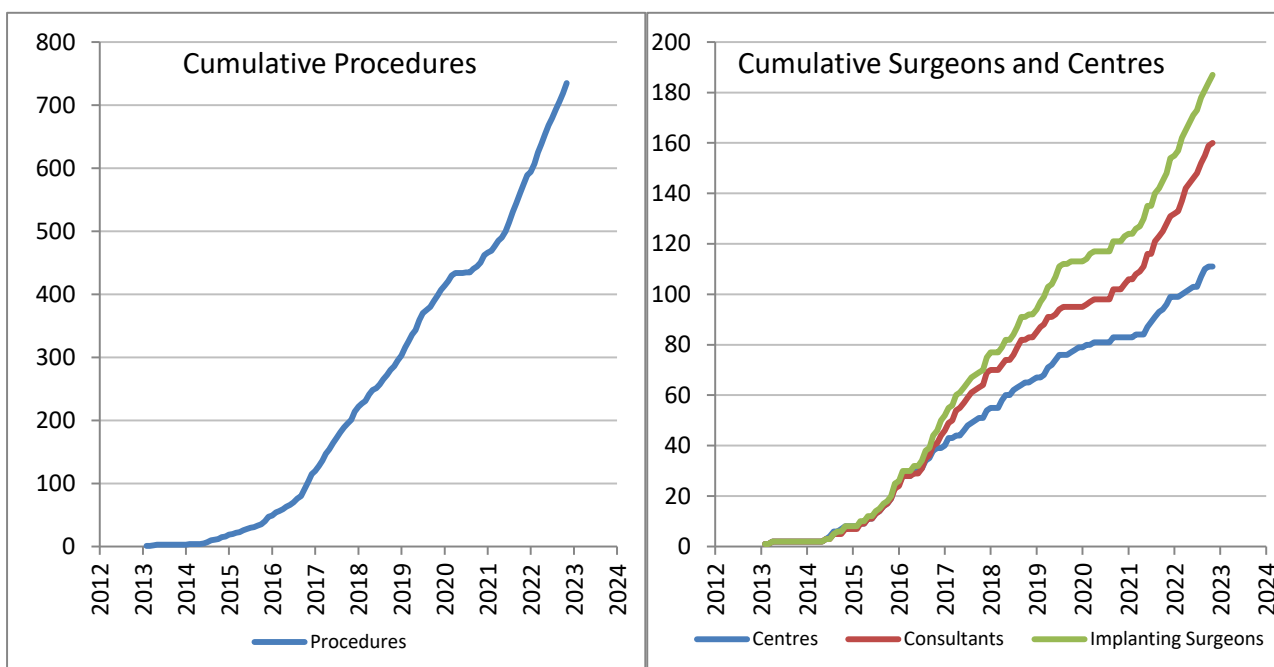
Date of first recorded usage in the NJR: **18 January 2013**

Date of last recorded usage in this dataset: **01 November 2022**

Maximum implantation time: 9.8 years

Mean implantation time: 3.1 years

Totals Recorded in NJR	Cumulative Total
Procedures	737
Patients	720
Centres	112
Consultants	162
Implanting Surgeons	189



Current Outcome	Pre-2011	Year of implantation												Total	%
		2011	2012	2013	2014	2015	2016	2017	2018	2019	2020	2021	2022		
Death	0	0	0	0	0	4	6	7	3	7	0	1	0	28	3.8%
Revised	0	0	0	0	2	1	2	3	7	1	2	3	0	21	2.8%
Unrevised	0	0	0	3	14	25	63	92	71	103	50	124	143	688	93.4%
Total	0	0	0	3	16	30	71	102	81	111	52	128	143	737	100%

Patient / Procedure Details

Patient Details

	Attune Cemented	All other Bicondylar knees in NJR
Total Procedures	737	45133
Total Patients	720	43224
Demographics		
Mean age	68.1	69.3
< 50	4.7%	3.1%
50 – 59	19.0%	15.0%
60 – 69	30.4%	32.1%
70 – 79	33.4%	35.7%
≥ 80	12.5%	14.1%
Median BMI	30	31
% BMI information available	77.3%	62.7%
Underweight (BMI < 18.5)	0.4%	0.2%
Normal (18.5 ≤ BMI < 25)	10.4%	9.5%
Overweight (25 ≤ BMI < 30)	36.0%	32.0%
Obese I (30 ≤ BMI < 35)	32.5%	33.2%
Obese II (35 ≤ BMI < 40)	16.8%	17.6%
Obese III (BMI ≥ 40)	4.0%	7.6%
% Male	41.5%	47.1%
ASA Grades		
P1 - Fit and healthy	8.0%	8.0%
P2 - Mild disease not incapacitating	69.2%	66.6%
P3 - Incapacitating systemic disease	22.7%	24.8%
P4 / P5	0.1%	0.6%
Indications		
Infection	1.6%	12.8%
AsepticLoosening	16.8%	40.0%
Pain	10.6%	13.7%
Instability	5.7%	14.4%
Malalignment	4.3%	8.3%
Stiffness	1.8%	5.0%
Lysis	1.8%	10.9%
DislocationSubluxation	1.6%	2.7%
Wear of Polyethylene Component	9.5%	14.1%
Progressive Arthritis Remaining	54.3%	15.2%
Periprosthetic Fracture	1.4%	1.9%
Other	11.9%	17.4%

Total of indications may exceed total number of implants, since more than one indication can be listed per case.

Revision and Survivorship

Reasons for Re-Revision

Reasons for re-revision of revision procedures in which the implant was used.

Reason for Re-Revision	Re-Revised †	Expected Revisions *	p value
Infection	5	8.38	0.299
Progressive Arthritis Remaining	1	1.13	1
Aseptic Loosening Femur	0	2.00	0.278
Aseptic Loosening Tibia	0	3.43	0.056
Aseptic Loosening Patella	0	0.49	1
Unexplained Pain	3	2.06	0.467
Stiffness	2	1.78	0.7
Malalignment	1	1.13	1
Instability	9	6.20	0.226
Dislocation / Subluxation	0	1.56	0.414
Periprosthetic Fracture	1	0.73	0.52
Wear of Polyethylene Component	0	0.47	1
Lysis - Tibia	0	0.69	1
Lysis - Femur	0	0.39	1
Component Dissociation	0	0.64	1
Implant Fracture	0	0.13	1
Other / Not recorded	1	1.52	1
Total Revised	21	26.07	0.376

† multiple reasons may be listed for one revision procedure

* Based on All NJR Bicondylar knees, adjusted for agegroup, gender, indications and implantation year

- Significantly better, $p < 0.001$
- Significantly better, $p < 0.05$
- Significantly worse $p < 0.05$
- Significantly worse $p < 0.001$

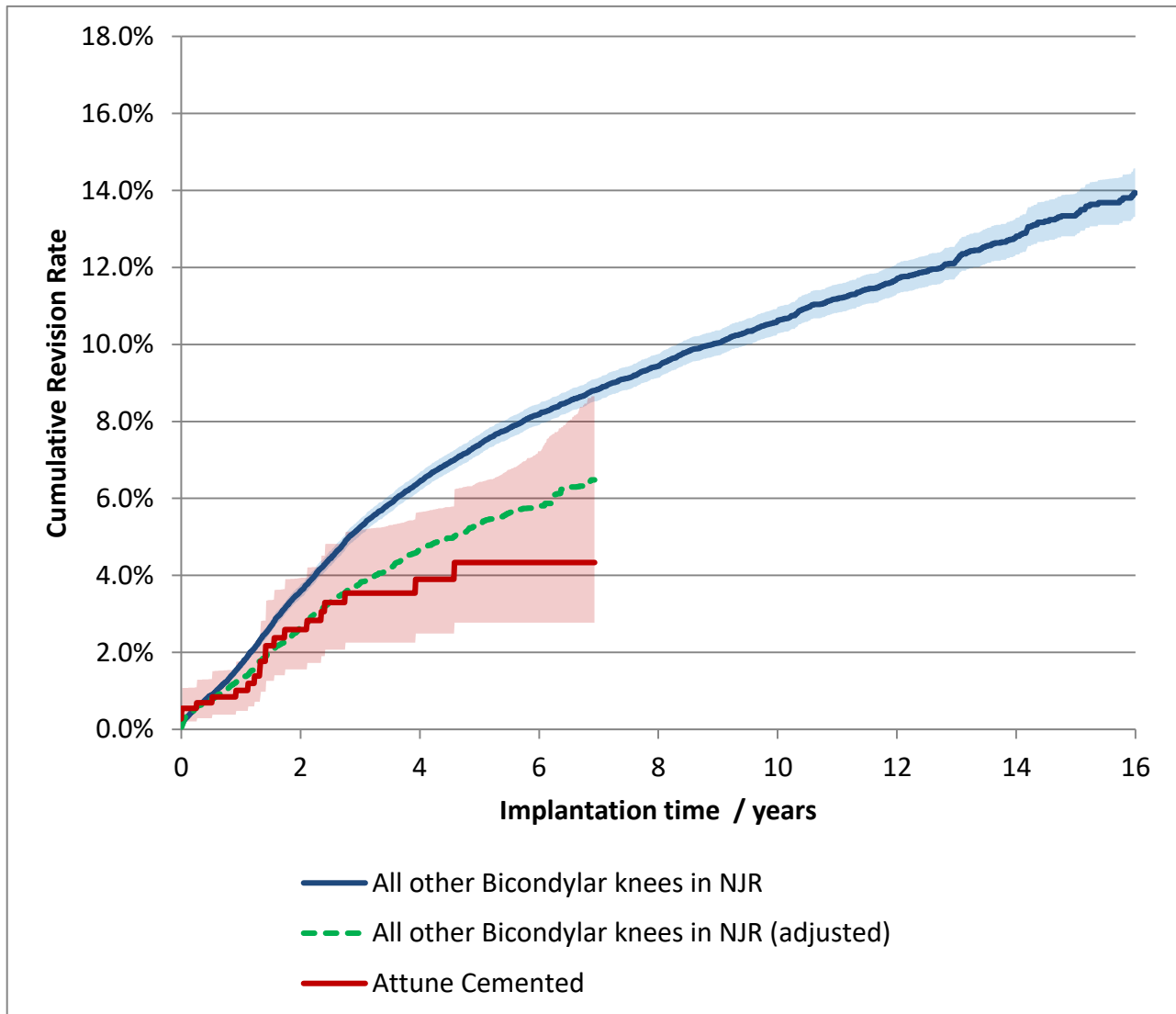


Components Re-Revised	Number of procedures	Attune Cemented	All other Bicondylar knees in NJR
Femoral and/or Tibial Re-Revision	11	52.4%	77.6%
Isolated bearing exchange	8	38.1%	14.8%
Patella revision / resurfacing only	1	4.8%	6.3%
No component revision recorded	1	4.8%	1.3%

Revision and Survivorship

Cumulative Re-Revision Rate

Endpoint: All reasons for re-revision



Cox Proportional Hazards model for revision risk ratio of Attune Cemented / All other Bicondylar knees in NJR, with endpoint as any revision.

Adjustment	Hazard Ratio (95% CI)	p-value
Unadjusted.	0.59 (0.38 - 0.90)	0.014
Adjusted for age, gender, year cohort and indications.	0.80 (0.52 - 1.23)	0.310

Revision and Survivorship

Cumulative Revision Rate

Endpoint: All revisions

Period /years	At Risk	Attune Cemented	All other Bicondylar knees in NJR
0	737	-	-
1	564	1.0% (0.5% - 1.8%)	1.7% (1.6% - 1.8%)
2	430	2.6% (1.6% - 3.9%)	3.6% (3.4% - 3.8%)
3	370	3.5% (2.3% - 5.2%)	5.2% (5.0% - 5.5%)
4	261	3.9% (2.5% - 5.6%)	6.4% (6.2% - 6.7%)
5	182	4.3% (2.8% - 6.4%)	7.4% (7.1% - 7.7%)
6	94	4.3% (2.8% - 7.2%)	8.2% (7.9% - 8.5%)
7		(-)	8.8% (8.5% - 9.1%)
8		(-)	9.4% (9.1% - 9.8%)
9		(-)	10.0% (9.7% - 10.4%)
10		(-)	10.6% (10.3% - 11.0%)
11		(-)	11.2% (10.8% - 11.6%)
12		(-)	11.7% (11.3% - 12.1%)
13		(-)	12.2% (11.8% - 12.6%)
14		(-)	12.8% (12.3% - 13.3%)
15		(-)	13.4% (12.8% - 13.9%)

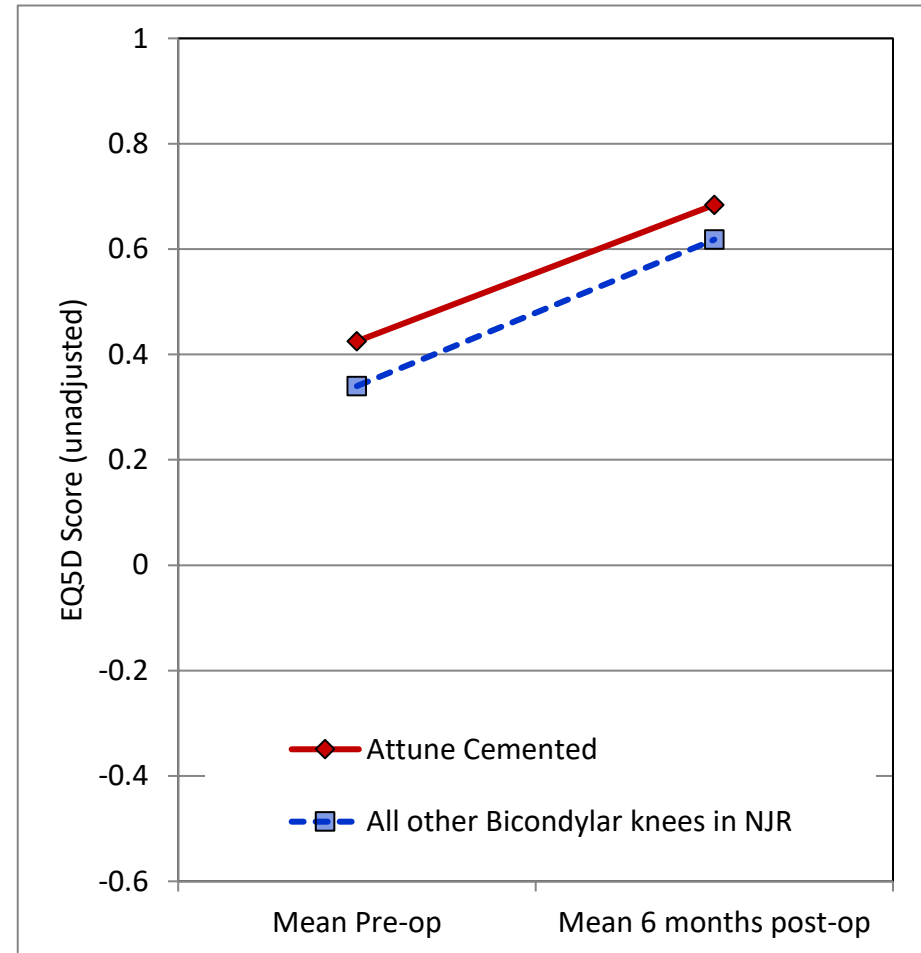
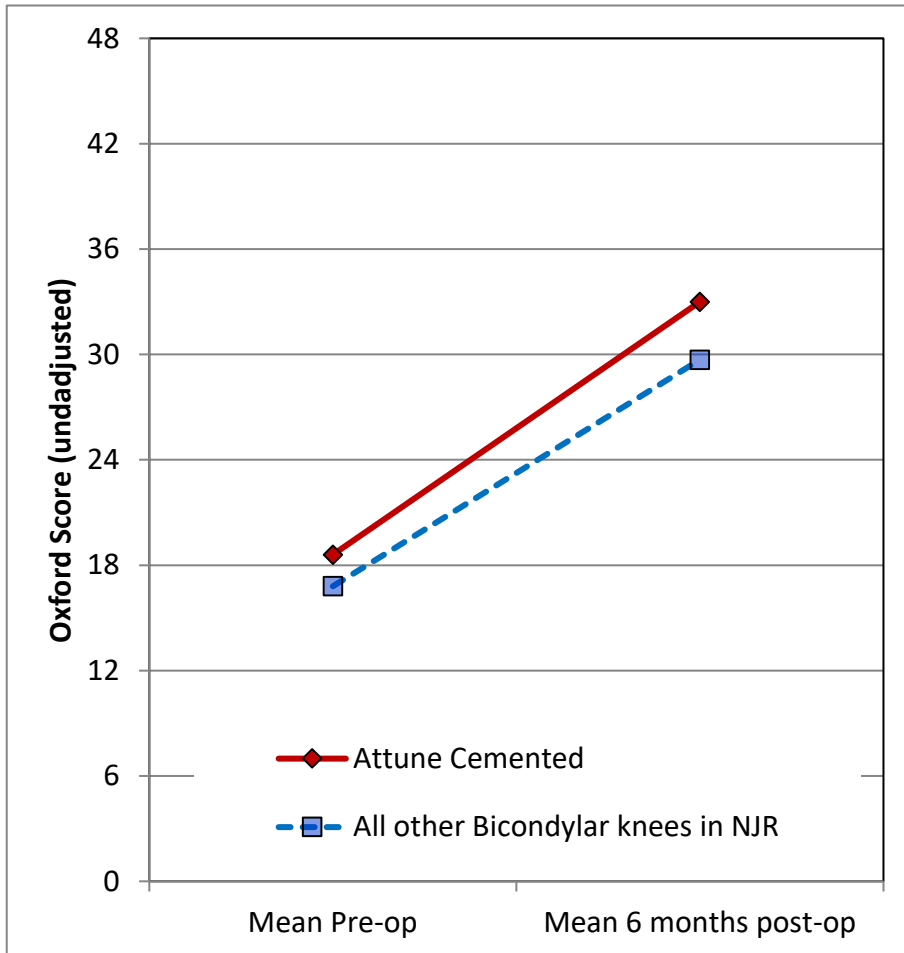
Cumulative revision rate with 95% confidence intervals

Rate is only reported for times where more than 40 remain at risk

Patient Reported Outcomes

Comprising PROMs data up to and including: 29/12/2020

PROMs Analysis



Patient Reported Outcomes

PROMs Analysis

Comprising PROMs data up to and including: 29/12/2020

Oxford Knee Score (0 - 48)	Attune Cemented	All other Bicondylar knees in NJR	All Knees in NJR
Paired Records	114	9,278	12,657
PreOp score	18.6 (17.1 - 20.1)	16.8 (16.7 - 17.0)	16.6 (16.5 - 16.7)
6 month score	33.0 (30.9 - 35.2)	29.7 (29.5 - 29.9)	29.2 (29.0 - 29.4)
6 month score (adjusted)	31.7 (29.7 - 33.7)	29.6 (29.4 - 29.8)	29.2 (29.0 - 29.3)
Health gain	14.4 (12.1 - 16.7)	12.9 (12.6 - 13.1)	12.6 (12.4 - 12.8)
Health gain (adjusted)	15.1 (13.1 - 17.1)	13.0 (12.8 - 13.2)	12.6 (12.4 - 12.7)
p value (adjusted health gain)	0.003		
Score Improved	84.2%	87.0%	86.4%

EQ-5D Index (-0.59 - 1.00)	Attune Cemented	All other Bicondylar knees in NJR	All Knees in NJR
Paired Records	104	8,527	11,659
PreOp score	0.425 (0.365 - 0.485)	0.340 (0.333 - 0.347)	0.332 (0.326 - 0.338)
6 month score	0.684 (0.625 - 0.743)	0.618 (0.611 - 0.624)	0.605 (0.600 - 0.611)
6 month score (adjusted)	0.637 (0.585 - 0.689)	0.616 (0.611 - 0.622)	0.605 (0.600 - 0.610)
Health gain	0.259 (0.190 - 0.329)	0.277 (0.270 - 0.285)	0.273 (0.267 - 0.280)
Health gain (adjusted)	0.305 (0.253 - 0.357)	0.284 (0.278 - 0.290)	0.273 (0.268 - 0.278)
p value (adjusted health gain)	0.2		
Score Improved	74.0%	71.7%	71.1%

EQ-VAS (0 - 100)	Attune Cemented	All other Bicondylar knees in NJR	All Knees in NJR
Paired Records	107	8,209	11,231
PreOp score	66.6 (62.3 - 70.8)	64.7 (64.2 - 65.2)	64.4 (64.0 - 64.8)
6 month score	70.9 (66.8 - 75.0)	67.5 (67.1 - 68.0)	66.9 (66.5 - 67.3)
6 month score (adjusted)	68.6 (64.8 - 72.3)	67.3 (66.9 - 67.8)	66.9 (66.5 - 67.2)
Health gain	4.3 (-0.2 - 8.8)	2.8 (2.3 - 3.3)	2.5 (2.0 - 2.9)
Health gain (adjusted)	4.1 (0.4 - 7.9)	2.9 (2.5 - 3.3)	2.5 (2.1 - 2.8)
p value (adjusted health gain)	0.33		
Score Improved	51.4%	49.6%	48.6%

Adjusted scores correspond to the NHS Digital version 3 casemix-adjustment model. This includes patient variables from PROMs, HES, and IMD data.

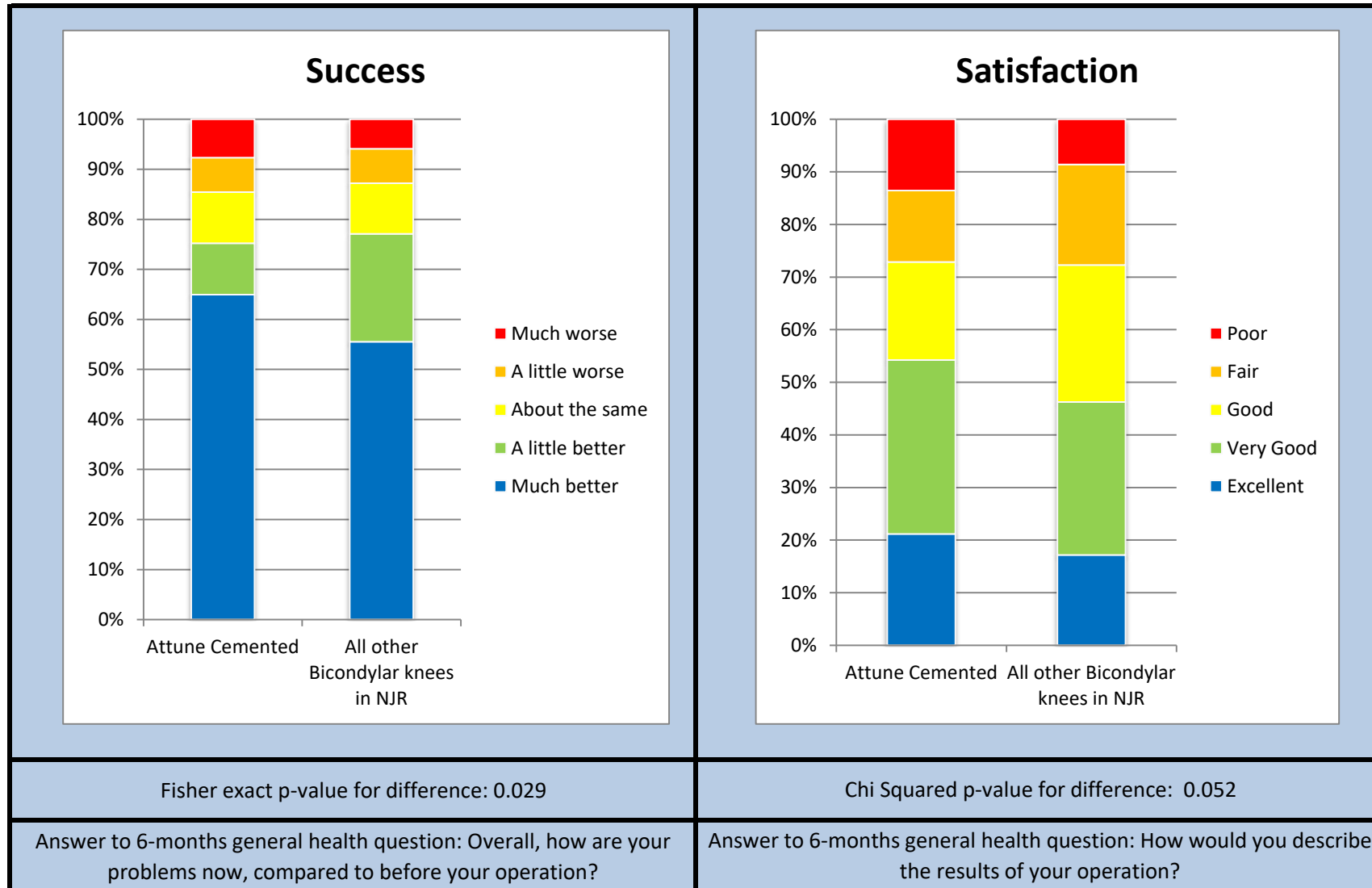
Figures in parentheses represent the 95% confidence interval for the mean

Summary Report for:

Attune Cemented

Responses are not case mix adjusted

Patient Reported Outcomes



Fisher exact p-value for difference: 0.029

Chi Squared p-value for difference: 0.052

Answer to 6-months general health question: Overall, how are your problems now, compared to before your operation?

Answer to 6-months general health question: How would you describe the results of your operation?

Patient Reported Outcomes

Success

Response	Attune Cemented	All other Bicondylar knees in NJR
Much better	76	5352
A little better	12	2080
About the same	12	974
A little worse	8	666
Much worse	9	568

Answer to 6-months general health question:

"Overall, how are your problems now, compared to before your operation?"

Satisfaction

Response	Attune Cemented	All other Bicondylar knees in NJR
Excellent	25	1652
Very Good	39	2794
Good	22	2506
Fair	16	1836
Poor	16	827

Answer to 6-months general health question:

"How would you describe the results of your operation?"

Disclaimer

Disclaimer

The data used for this analysis was obtained from the National Joint Registry ("NJR"), part of the Healthcare Quality Improvement Partnership ("HQIP"). HQIP, the NJR and/or its contractor, NEC Software Solutions (UK) Limited ("NEC") take no responsibility (except as prohibited by law) for the accuracy, currency, reliability and correctness of any data used or referred to in this report, nor for the accuracy, currency, reliability and correctness of links or references to other information sources and disclaims all warranties in relation to such data, links and references to the maximum extent permitted by legislation including any duty of care to third party readers of the data analysis.

To the maximum extent permitted by law, neither the NJR or NEC shall have any liability (including but not limited to liability by reason of negligence) for any loss, damage, cost or expense incurred or arising by reason of any person using or relying on the data within this report and whether caused by reason of any error, omission or misrepresentation in the report or otherwise. This report is not to be taken as advice. Third parties using or relying on the data in this report do so at their own risk and will be responsible for making their own assessment and should verify all relevant representations, statements and information with their own professional advisers.

Appendix A: Component List

Catalogue Number	Description	Number Implanted
151620310	Attune CR FB Insert Size 3 10mm	2
151620405	Attune CR FB Insert Size 4 5mm	9
151620406	Attune CR FB Insert Size 4 6mm	6
151620407	Attune CR FB Insert Size 4 7mm	2
151620408	Attune CR FB Insert Size 4 8mm	2
151620410	Attune CR FB Insert Size 4 10mm	3
151620412	Attune CR FB Insert Size 4 12mm	3
151620416	Attune CR FB Insert Size 4 16mm	1
151620505	Attune CR FB Insert Size 5 5mm	7
151620506	Attune CR FB Insert Size 5 6mm	9
151620507	Attune CR FB Insert Size 5 7mm	8
151620508	Attune CR FB Insert Size 5 8mm	12
151620510	Attune CR FB Insert Size 5 10mm	10
151620512	Attune CR FB Insert Size 5 12mm	9
151620514	Attune CR FB Insert Size 5 14mm	2
151620605	Attune CR FB Insert Size 6 5mm	22
151620606	Attune CR FB Insert Size 6 6mm	10
151620607	Attune CR FB Insert Size 6 7mm	6
151620608	Attune CR FB Insert Size 6 8mm	17
151620610	Attune CR FB Insert Size 6 10mm	13
151620612	Attune CR FB Insert Size 6 12mm	6
151620614	Attune CR FB Insert Size 6 14mm	3
151620705	Attune CR FB Insert Size 7 5mm	11
151620706	Attune CR FB Insert Size 7 6mm	6
151620707	Attune CR FB Insert Size 7 7mm	3
151620708	Attune CR FB Insert Size 7 8mm	2
151620710	Attune CR FB Insert Size 7 10mm	12
151620712	Attune CR FB Insert Size 7 12mm	3
151620714	Attune CR FB Insert Size 7 14mm	1
151620805	Attune CR FB Insert Size 8 5mm	2
151620806	Attune CR FB Insert Size 8 6mm	4
151620807	Attune CR FB Insert Size 8 7mm	3
151620808	Attune CR FB Insert Size 8 8mm	9
151620810	Attune CR FB Insert Size 8 10mm	2
151620812	Attune CR FB Insert Size 8 12mm	5
151620814	Attune CR FB Insert Size 8 14mm	1
151620906	Attune CR FB Insert Size 9 6mm	1
151620912	Attune CR FB Insert Size 9 12mm	1
151630305	Attune CR RP Insert Size 3 5mm	1
151630307	Attune CR RP Insert Size 3 7mm	1
151630310	Attune CR RP Insert Size 3 10mm	2
151630405	Attune CR RP Insert Size 4 5mm	3
151630406	Attune CR RP Insert Size 4 6mm	3
151630407	Attune CR RP Insert Size 4 7mm	6
151630408	Attune CR RP Insert Size 4 8mm	2
151630410	Attune CR RP Insert Size 4 10mm	2

Appendix A: Component List

Catalogue Number	Description	Number Implanted
151630412	Attune CR RP Insert Size 4 12mm	4
151630505	Attune CR RP Insert Size 5 5mm	3
151630506	Attune CR RP Insert Size 5 6mm	5
151630507	Attune CR RP Insert Size 5 7mm	4
151630508	Attune CR RP Insert Size 5 8mm	5
151630510	Attune CR RP Insert Size 5 10mm	3
151630514	Attune CR RP Insert Size 5 14mm	1
151630516	Attune CR RP Insert Size 5 16mm	1
151630605	Attune CR RP Insert Size 6 5mm	1
151630606	Attune CR RP Insert Size 6 6mm	2
151630607	Attune CR RP Insert Size 6 7mm	2
151630608	Attune CR RP Insert Size 6 8mm	2
151630610	Attune CR RP Insert Size 6 10mm	4
151630612	Attune CR RP Insert Size 6 12mm	1
151630614	Attune CR RP Insert Size 6 14mm	1
151630705	Attune CR RP Insert Size 7 5mm	4
151630706	Attune CR RP Insert Size 7 6mm	4
151630707	Attune CR RP Insert Size 7 7mm	1
151630708	Attune CR RP Insert Size 7 8mm	5
151630710	Attune CR RP Insert Size 7 10mm	1
151630806	Attune CR RP Insert Size 8 6mm	2
151630807	Attune CR RP Insert Size 8 7mm	1
151630808	Attune CR RP Insert Size 8 8mm	3
151630810	Attune CR RP Insert Size 8 10mm	2
151630812	Attune CR RP Insert Size 8 12mm	1
151640206	Attune PS FB Insert Size 2 6mm	1
151640212	Attune PS FB Insert Size 2 12mm	1
151640305	Attune PS FB Insert Size 3 5mm	5
151640306	Attune PS FB Insert Size 3 6mm	3
151640307	Attune PS FB Insert Size 3 7mm	4
151640308	Attune PS FB Insert Size 3 8mm	1
151640310	Attune PS FB Insert Size 3 10mm	3
151640312	Attune PS FB Insert Size 3 12mm	2
151640405	Attune PS FB Insert Size 4 5mm	13
151640406	Attune PS FB Insert Size 4 6mm	4
151640407	Attune PS FB Insert Size 4 7mm	3
151640408	Attune PS FB Insert Size 4 8mm	5
151640410	Attune PS FB Insert Size 4 10mm	5
151640412	Attune PS FB Insert Size 4 12mm	11
151640414	Attune PS FB Insert Size 4 14mm	4
151640416	Attune PS FB Insert Size 4 16mm	1
151640505	Attune PS FB Insert Size 5 5mm	15
151640506	Attune PS FB Insert Size 5 6mm	20
151640507	Attune PS FB Insert Size 5 7mm	9
151640508	Attune PS FB Insert Size 5 8mm	10
151640510	Attune PS FB Insert Size 5 10mm	17

Appendix A: Component List

Catalogue Number	Description	Number Implanted
151640512	Attune PS FB Insert Size 5 12mm	5
151640514	Attune PS FB Insert Size 5 14mm	4
151640518	Attune PS FB Insert Size 5 18mm	1
151640605	Attune PS FB Insert Size 6 5mm	16
151640606	Attune PS FB Insert Size 6 6mm	12
151640607	Attune PS FB Insert Size 6 7mm	13
151640608	Attune PS FB Insert Size 6 8mm	10
151640610	Attune PS FB Insert Size 6 10mm	8
151640612	Attune PS FB Insert Size 6 12mm	6
151640614	Attune PS FB Insert Size 6 14mm	3
151640616	Attune PS FB Insert Size 6 16mm	1
151640620	Attune PS FB Insert Size 6 20mm	1
151640705	Attune PS FB Insert Size 7 5mm	6
151640706	Attune PS FB Insert Size 7 6mm	8
151640707	Attune PS FB Insert Size 7 7mm	6
151640708	Attune PS FB Insert Size 7 8mm	11
151640710	Attune PS FB Insert Size 7 10mm	7
151640712	Attune PS FB Insert Size 7 12mm	4
151640714	Attune PS FB Insert Size 7 14mm	1
151640716	Attune PS FB Insert Size 7 16mm	1
151640805	Attune PS FB Insert Size 8 5mm	1
151640806	Attune PS FB Insert Size 8 6mm	3
151640807	Attune PS FB Insert Size 8 7mm	5
151640808	Attune PS FB Insert Size 8 8mm	6
151640810	Attune PS FB Insert Size 8 10mm	5
151640812	Attune PS FB Insert Size 8 12mm	2
151640814	Attune PS FB Insert Size 8 14mm	1
151640818	Attune PS FB Insert Size 8 18mm	1
151640905	Attune PS FB Insert Size 9 5mm	3
151640910	Attune PS FB Insert Size 9 10mm	2
151650305	Attune PS RP Insert Size 3 5mm	1
151650307	Attune PS RP Insert Size 3 7mm	1
151650310	Attune PS RP Insert Size 3 10mm	1
151650405	Attune PS RP Insert Size 4 5mm	6
151650406	Attune PS RP Insert Size 4 6mm	5
151650407	Attune PS RP Insert Size 4 7mm	5
151650408	Attune PS RP Insert Size 4 8mm	2
151650410	Attune PS RP Insert Size 4 10mm	2
151650412	Attune PS RP Insert Size 4 12mm	1
151650505	Attune PS RP Insert Size 5 5mm	7
151650506	Attune PS RP Insert Size 5 6mm	8
151650507	Attune PS RP Insert Size 5 7mm	8
151650508	Attune PS RP Insert Size 5 8mm	3
151650510	Attune PS RP Insert Size 5 10mm	3
151650512	Attune PS RP Insert Size 5 12mm	2
151650514	Attune PS RP Insert Size 5 14mm	1

Appendix A: Component List

Catalogue Number	Description	Number Implanted
151650605	Attune PS RP Insert Size 6 5mm	4
151650606	Attune PS RP Insert Size 6 6mm	8
151650607	Attune PS RP Insert Size 6 7mm	3
151650608	Attune PS RP Insert Size 6 8mm	3
151650610	Attune PS RP Insert Size 6 10mm	2
151650612	Attune PS RP Insert Size 6 12mm	4
151650705	Attune PS RP Insert Size 7 5mm	6
151650706	Attune PS RP Insert Size 7 6mm	11
151650707	Attune PS RP Insert Size 7 7mm	7
151650708	Attune PS RP Insert Size 7 8mm	1
151650710	Attune PS RP Insert Size 7 10mm	4
151650805	Attune PS RP Insert Size 8 5mm	3
151650806	Attune PS RP Insert Size 8 6mm	3
151650808	Attune PS RP Insert Size 8 8mm	3
151650810	Attune PS RP Insert Size 8 10mm	7
151650814	Attune PS RP Insert Size 8 14mm	1
151650906	Attune PS RP Insert Size 9 6mm	2
151710506	ATTUNE Revision CRS Rotating Platform Insert Size 5 6mm AOX	1
151710610	ATTUNE Revision CRS Rotating Platform Insert Size 6 10 mm AOX	1
151710706	ATTUNE Revision CRS Rotating Platform Insert Size 7 6 mm AOX	1
Patella		
151810032	Attune Medialized Anatomic Patella 32mm	5
151810035	Attune Medialized Anatomic Patella 35mm	19
151810038	Attune Medialized Anatomic Patella 38mm	25
151810041	Attune Medialized Anatomic Patella 41mm	9
151820029	Attune Medialized Dome Patella 29mm	2
151820032	Attune Medialized Dome Patella 32mm	27
151820035	Attune Medialized Dome Patella 35mm	123
151820038	Attune Medialized Dome Patella 38mm	160
151820041	Attune Medialized Dome Patella 41mm	122
960101	PFC® SIGMA OVAL PATELLA 35mm	1
Tibial Wedge		
151111101	Attune Revision Tibial Sleeve Half Porous Sleeve 29mm	30
151111102	Attune Revision Tibial Sleeve Half Porous Sleeve 37mm	34
151111103	Attune Revision Tibial Sleeve Half Porous Sleeve 45mm	9
151111104	Attune Revision Tibial Sleeve Half Porous Sleeve 53mm	4
151111105	Attune Revision Tibial Sleeve Half Porous Sleeve 61mm	1
151111201	Attune Revision Tibial Sleeve Half Porous Sleeve 29mm	10
151111202	Attune Revision Tibial Sleeve Half Porous Sleeve 37mm	12
151111203	Attune Revision Tibial Sleeve Half Porous Sleeve 45mm	4
151111204	Attune Revision Tibial Sleeve Half Porous Sleeve 53mm	2
152303001	Attune Revision Tibial Augment UniversalSize3/4x5mm	3
152303102	Attune Revision Tibial Augment LM/RLSize3/4x10mm	2
152305001	Attune Revision Tibial Augment UniversalSize5/6x5mm	5

Appendix A: Component List

Catalogue Number	Description	Number Implanted
152305102	Attune Revision Tibial Augment LM/RLSize5/6x10mm	2
152305203	Attune Revision Tibial Augment RM/LLSize5/6x15mm	1
152307001	Attune Revision Tibial Augment UniversalSize7/8x5mm	4
152307102	Attune Revision Tibial Augment LM/RLSize7/8x10mm	1
152307202	Attune Revision Tibial Augment RM/LL Size 7/8 x 10mm	1
Tib Fem Extension Stem		
151214030	ATTUNE Revision Tibial Stem Cemented 14mm x 30mm	14
151214050	ATTUNE Revision Tibial Stem Cemented 14mm x 50mm	26
151214080	ATTUNE Revision Tibial Stem Cemented 14mm x 80mm	1
151310060	AttuneRevisionPressFitStem10mmx60mm	8
151310110	AttuneRevisionPressFitStem10mmx110mm	4
151312060	AttuneRevisionPressFitStem12mmx60mm	24
151312110	AttuneRevisionPressFitStem12mmx110mm	4
151314060	AttuneRevisionPressFitStem14mmx60mm	50
151314110	AttuneRevisionPressFitStem14mmx110mm	4
151316060	AttuneRevisionPressFitStem16mmx60mm	5
151316110	ATTUNE Revision Press Fit Femoral Stem 16x110mm	1