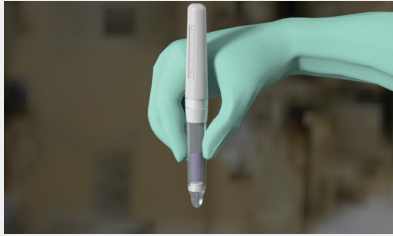
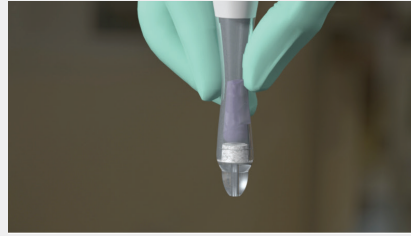


DERMABOND ADVANCED® Topical Skin Adhesive

Key Tips for Surgeon Training

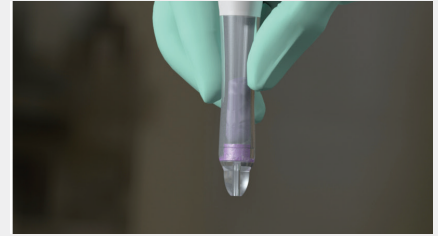


Hold the applicator away from the patient with the tip pointed downward.

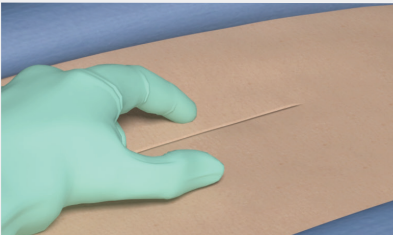


Squeeze the bulb to crush the ampoule inside, and then release pressure.

PRECAUTION: Do not continuously crush glass ampoule inside the bulb.



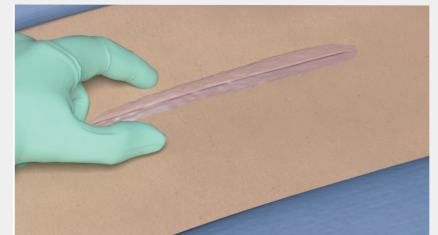
Gently squeeze the bulb again to moisten the internal filter with adhesive.



Approximate the wound edges with gloved fingers or forceps.



Apply DERMABOND ADVANCED Adhesive in a single continuous layer, maintaining steady bulb pressure.



Hold skin edges for about 60 seconds, full polymerization is expected when the adhesive is no longer sticky.

Prior to Application

1. Ensure completion of deep dermal approximation to relieve tension on the skin edges. DERMABOND ADVANCED Adhesive was designed to be used in conjunction with subcuticular sutures.
2. Ensure hemostasis is achieved.
3. Make sure the wound is thoroughly cleansed, hemostasis is achieved, and patted dry.
Note: Excessive fluids on the wound, including blood, may produce a clogged applicator tip, compromising product performance.
4. Approximate the wound edges with gloved fingers or sterile forceps, as necessary.
5. Hold the applicator away from yourself and the patient with the tip pointing down and crush the glass ampoule at its midpoint. **PRECAUTION:** Do not crush the contents of the applicator repeatedly as further manipulation of the applicator may cause shard penetration and can result in inadvertent skin punctures, which may result in transmission of bloodborne pathogens.
6. Gently squeeze the applicator sufficiently to moisten the internal filter with the liquid adhesive.
7. Stop squeezing and allow the liquid DERMABOND ADVANCED Adhesive to draw back into the applicator.
Note: Any delays in application from the time of glass ampoule crushing may result in the formulation drying in the pen prior to application.

During Application

8. DERMABOND ADVANCED® Topical Skin Adhesive requires only a single layer of application, which allows for up to 15 cm of incision coverage. Applying a second layer is not required or recommended.
9. The width of the adhesive layer can be increased or decreased by adjusting the amount of pressure applied to the bulb during application and reducing or increasing the speed of application. The harder one presses on the pen and the slower they travel down the incision, the wider the coverage will be. On the other hand, when a narrow covering is desired, one should not press as hard on the silicone part of the pen when traveling down the incision.
10. Do not press the applicator tip excessively hard against the wound edges or surrounding skin. This could force the skin apart and allow liquid topical skin adhesive into the wound, delaying wound healing and/or resulting in adverse cosmetic results. This could also result in the tip of the pen “pushing” away the recent application of the adhesive.
11. When applying, minimize the pressure applied to the skin to avoid any clogging of the tip (too much pressure on the skin may restrict the adhesive flow, potentially making the product set prematurely).

After Application

12. Do not apply liquid or ointment medications onto wounds closed with DERMABOND ADVANCED Adhesive because these substances can weaken the polymerized film, leading to skin edge separation.
13. Protective dry dressings such as gauze or bandages may be applied only after DERMABOND ADVANCED Adhesive film has completely polymerized (not tacky to the touch). This may take a few minutes.



For complete indications, contraindications, warnings, precautions, and adverse reactions, please reference full package insert.

Product Code	Description	Size	Packaging
DNX12	DERMABOND ADVANCED® Topical Skin Adhesive <ul style="list-style-type: none"> • Unique formulation with an easy-to-use applicator for precise control for wide and fine line applications 	0.7 mL	12 ea/box
DNX6	DERMABOND ADVANCED® Topical Skin Adhesive <ul style="list-style-type: none"> • Unique formulation with an easy-to-use applicator for precise control for wide and fine line applications 	0.7 mL	6 ea/box

Reference: DERMABOND ADVANCED® Topical Skin Adhesive Instructions for Use. Ethicon, Inc.