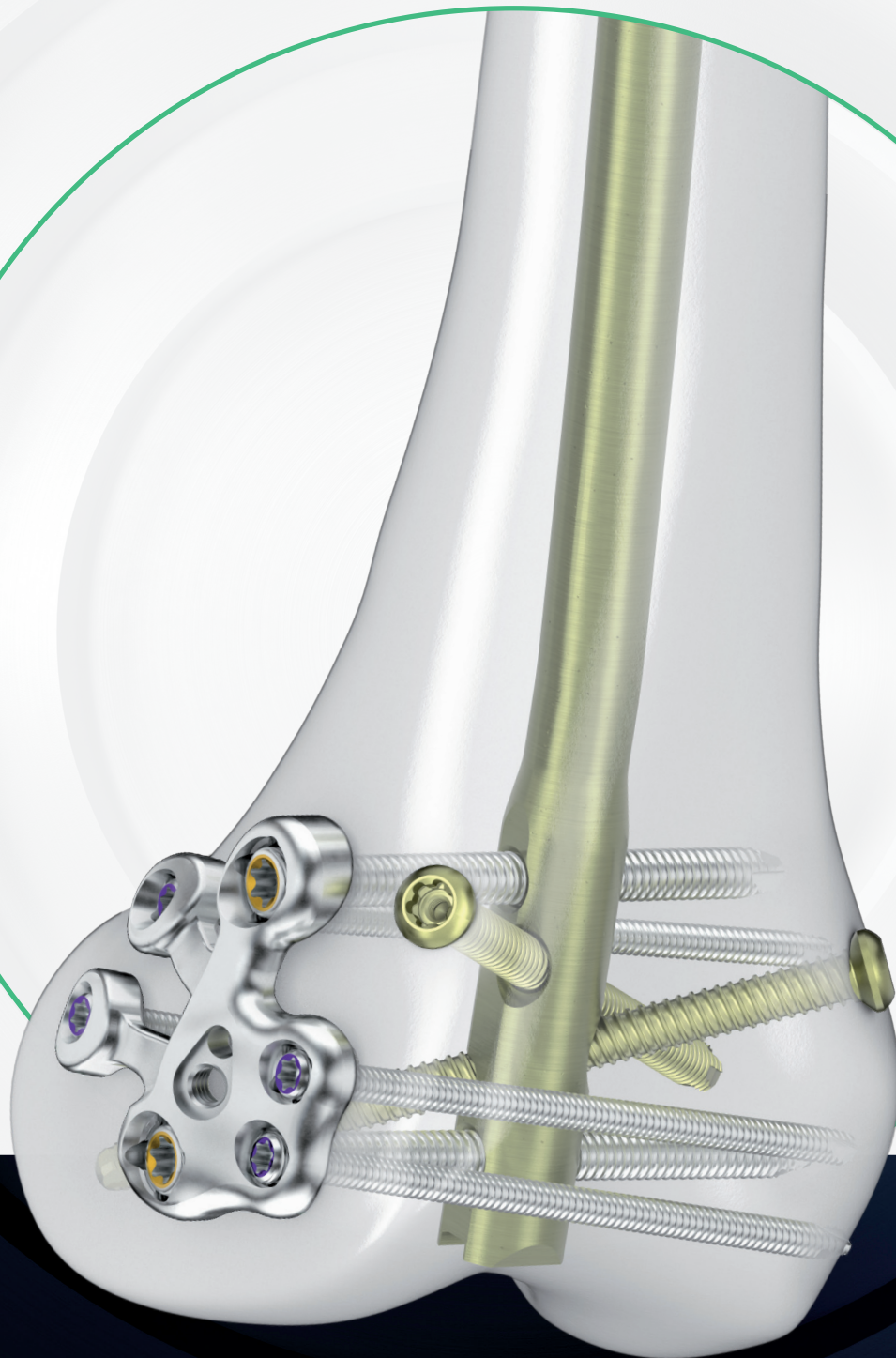
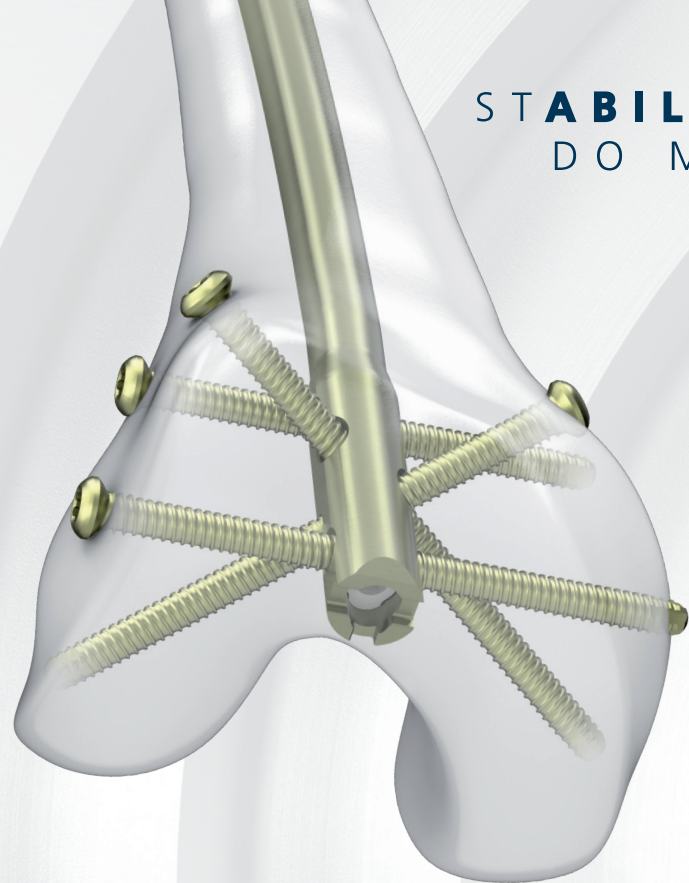


RFN Advanced

RETROGRADE FEMORAL NAILING SYSTEM



STABILITY TO DO MORE™



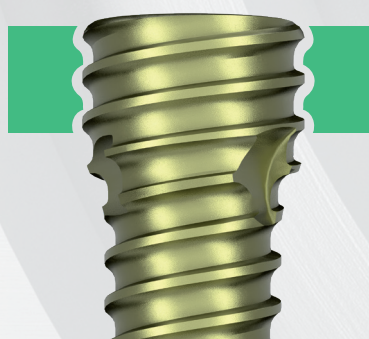
MULTI-PLANER DESCENDING OBLIQUE SCREW PATTERN

Two descending oblique screws target denser posterior condyles.



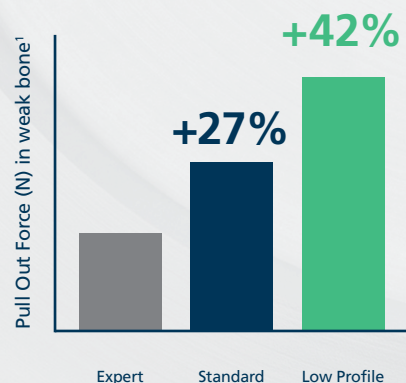
INCREASED PURCHASE AND TACTILE FEEDBACK

Enlarged diameter of last few threads contributes to increased pull-out strength, more tactile feedback, and **92% higher torque before stripping** in a poor quality bone model compared to a conventional Expert Nail™ Locking Screw.¹



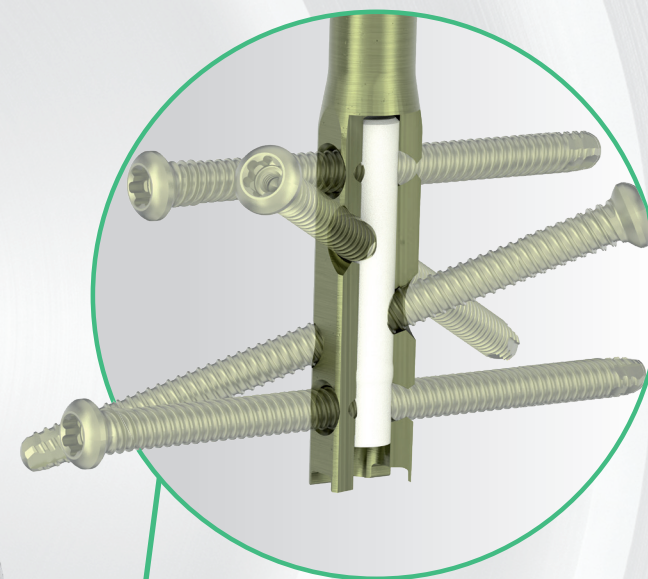
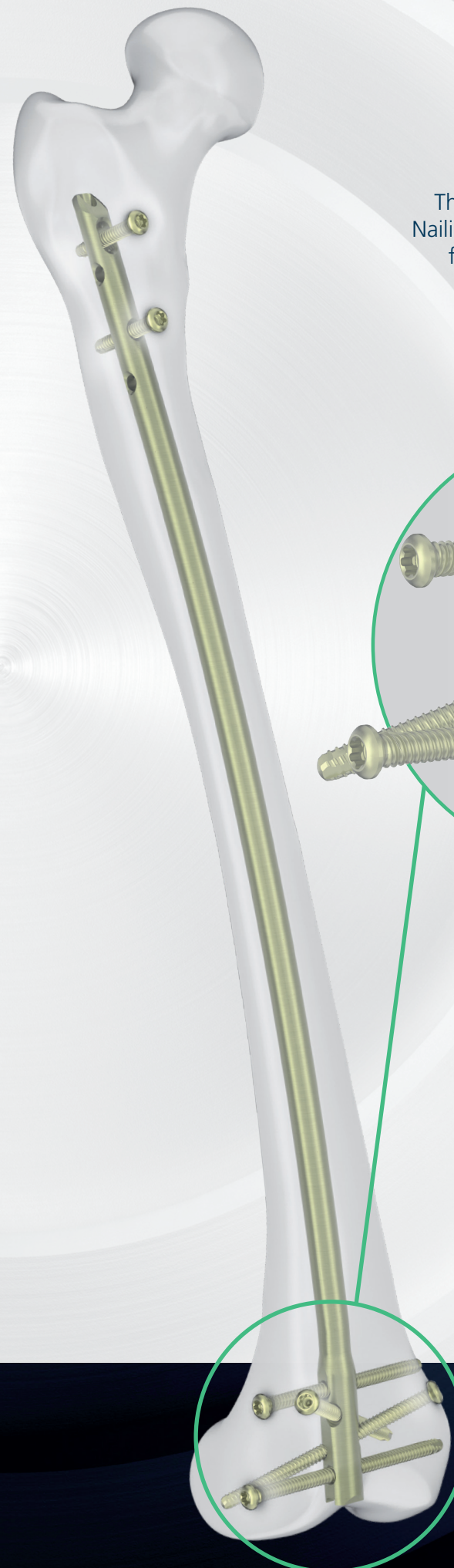
REDUCED PROMINENCE

The Low Profile Screw and screws with rounded tips are designed to reduce implant prominence in areas of minimal soft tissue coverage.¹



INCREASED STABILITY

The RFN-Advanced™ Retrograde Femoral Nailing System (RFNA) is designed to improve fixation by reduced toggle and loss of reduction for distal femur fractures.²

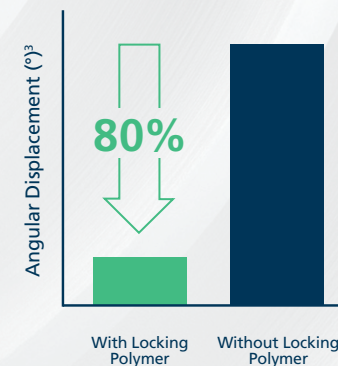


ANGULAR STABILITY

Locking Polymer is built into the nail for **angular stability in all distal locking screws** without additional steps, end caps, or special instruments.²

Designed to avoid the challenges associated with cross-threading and cold-welding.²

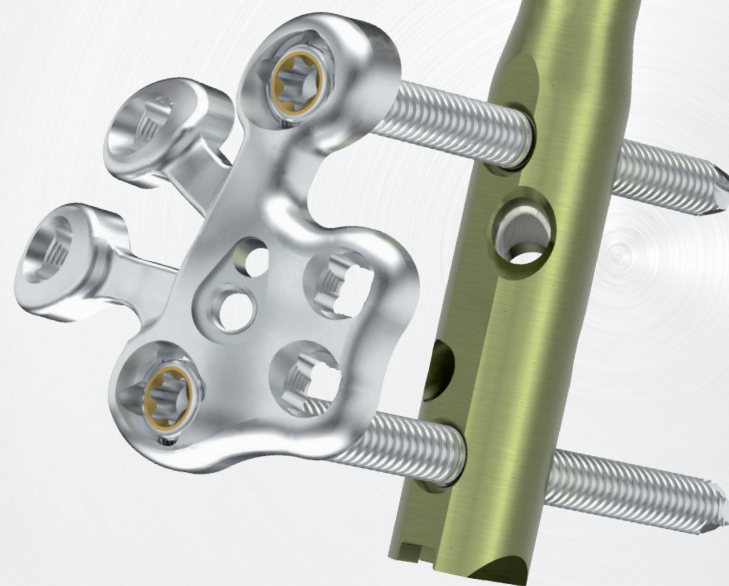
REDUCED SCREW TOGGLE AND SCREW LOOSENING



Designed to help maintain alignment of the distal fragment, the Locking Polymer **reduces screw toggle by 80%** and holds the screw in position relative to the nail, **increasing pull out strength up to 128%**, compared to a nail without Locking Polymer.^{1,3,4}

DESIGNED FOR SIMPLE TO COMPLEX CASES

The Locking Attachment Washer (LAW) is designed to improve the stability of nailing, particularly for patients with osteoporosis, obesity, short distal segments where additional points of fixation are needed, or periprosthetic fractures.⁵



LOCKED BLOCK OF SUPPORT

5.0mm VA Locking Screws thread into the Locking Attachment Washer and into the nail to create a **fixed angle construct**.

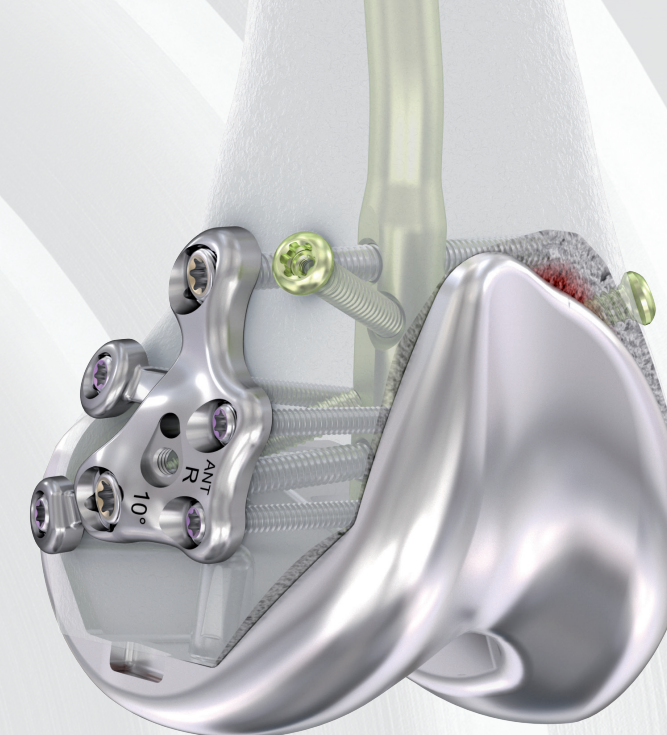


SIMPLIFIED, GUIDED ALIGNMENT OF SCREWS THROUGH LAW & NAIL

5.0mm VA Locking Screws are targeted through aiming arm to **consistently align** the LAW with the Nail.

PERIPROSTHETIC LOCKING ATTACHMENT WASHER

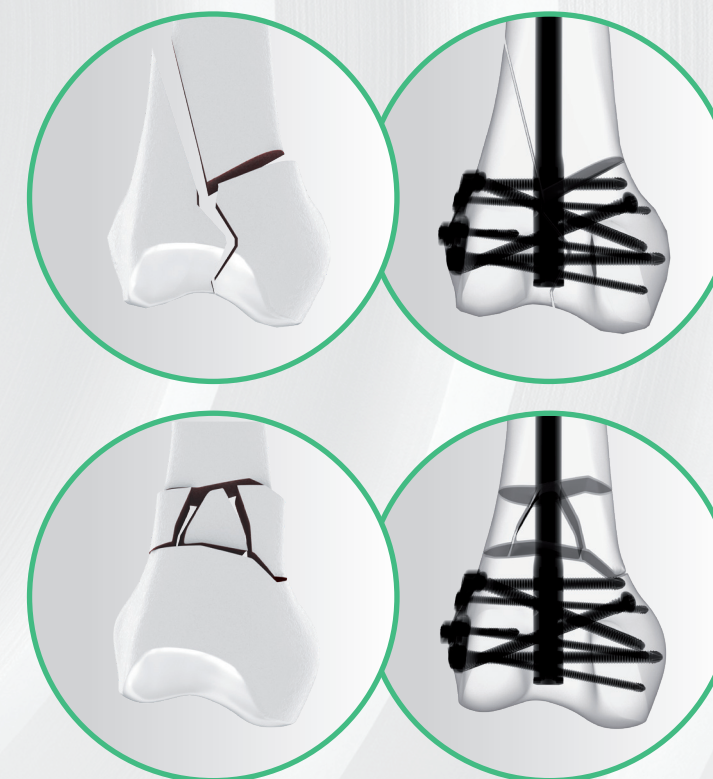
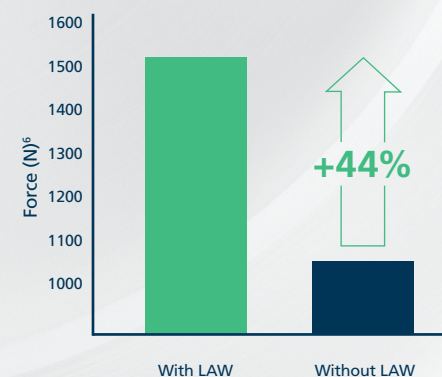
RFN-Advanced System offers two Locking Attachment Washers, including one **designed with a larger offset** and with screw holes specifically for use with a TKA.



DISTAL SCREW DENSITY

3.5mm Variable Angle Locking Screws designed to fit around the nail and interlocking screws.

The addition of the Locking Attachment Washer **increases the fixation strength by 44%** compared to nailing alone.⁶



DESIGNED FOR SIMPLE TO COMPLEX CASES

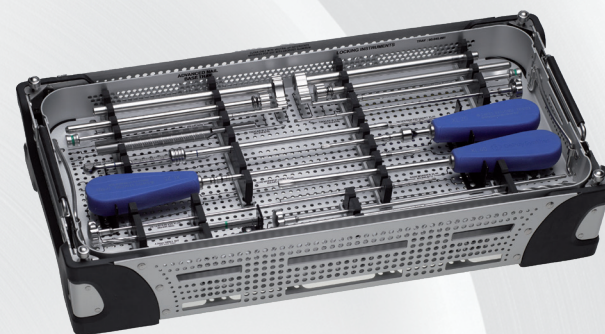
INTUITIVE CONNECTED INSTRUMENTATION

PERIPROSTHETIC NAIL WITH 10° DISTAL BEND

Periprosthetic Nail is designed to reduce the likelihood of an extension deformity that can result from a posterior entry point in TKA patients.⁷

Nails designed with flats medially and laterally for a max width of 11.2mm to fit through narrow open box prostheses.

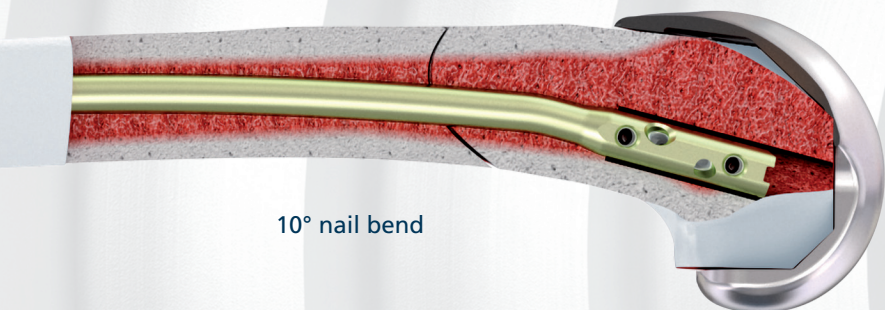
Advanced
NAILING SYSTEM



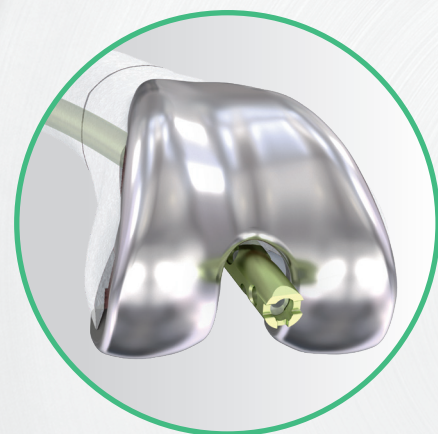
Shared Base Instruments provide consistency to support reduction in storage, duplication and staff learning.⁸



Standard nail with small or no bend



10° nail bend

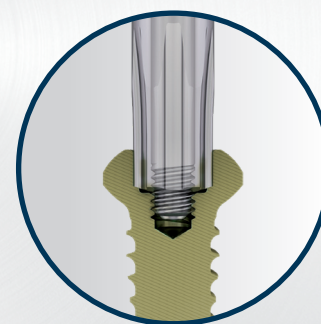


QUICK CONNECT LATCH

Efficient assembly / disassembly.⁸

SECURE RETENTION INSTRUMENTATION

Solid "screw to screwdriver" connection. Same drivers used for both screws, available in manual & power.

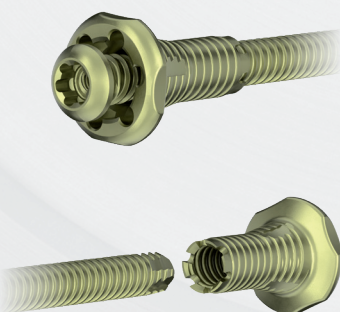


CONDYLAR NUTS

Conically-shaped, condylar nuts have 3.4x greater surface contact with bone, resulting in 2.3x greater load before loss of fixation than standard screws.¹

Nuts have internal threads to engage with standard screws at the screw head and at the screw tip.

Washers can be added to screw head and to nuts to further increase surface area contact.

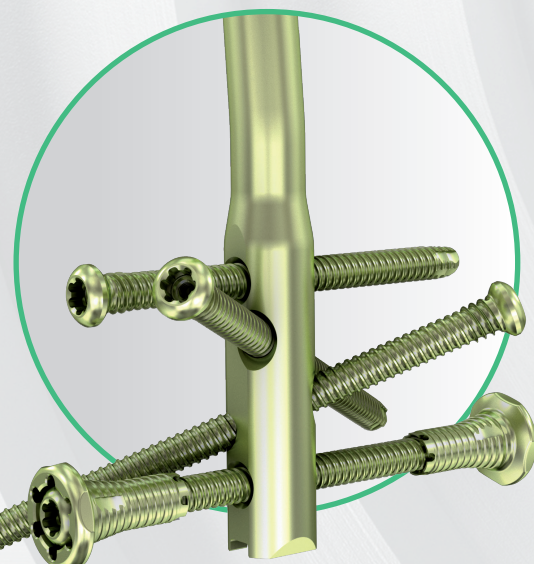
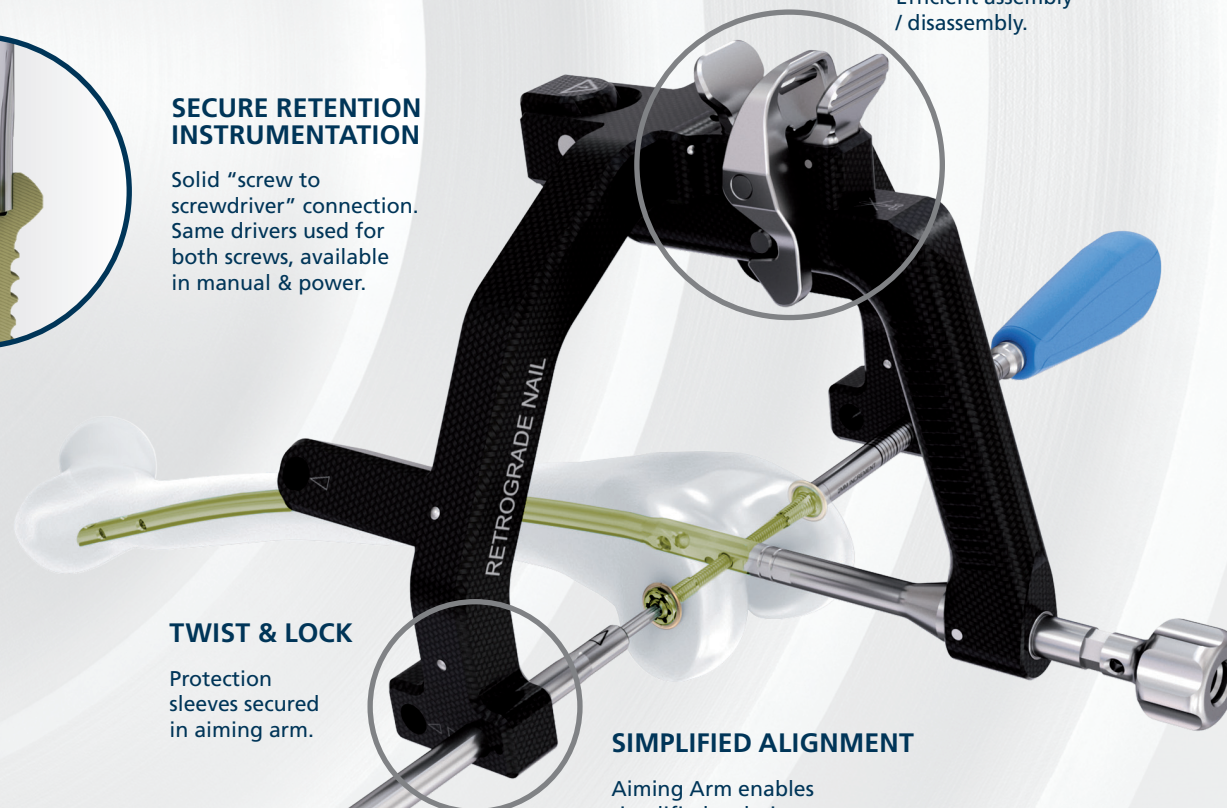


TWIST & LOCK

Protection sleeves secured in aiming arm.

SIMPLIFIED ALIGNMENT

Aiming Arm enables simplified technique for Locking Attachment Washer and for Condylar Nuts and Washers.



RFN Advanced™

RETROGRADE FEMORAL NAILING SYSTEM

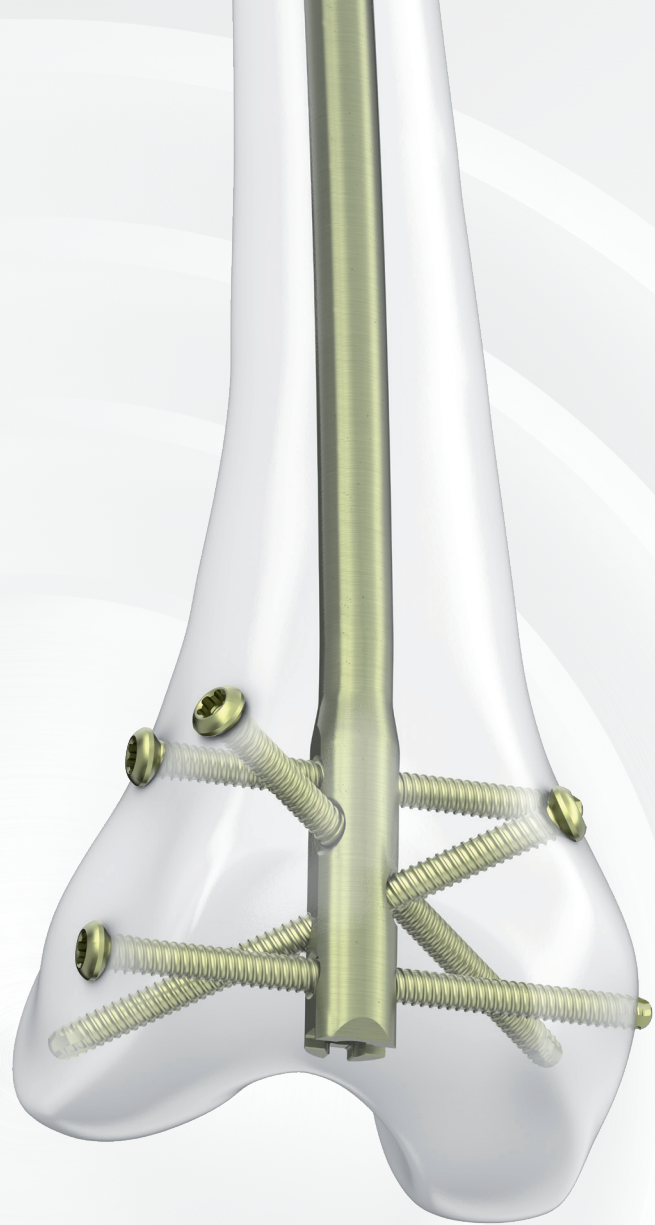
INCREASED
STABILITY²

DESIGNED FOR SIMPLE
TO COMPLEX CASES⁵

INTUITIVE, CONNECTED
INSTRUMENTATION⁸

To learn more about the future of nailing,
contact your DePuy Synthes Sales Consultant.

Please also refer to the package insert(s) or other labelling
associated with the devices identified in this brochure for
additional information.



REFERENCES

1. DePuy Synthes test result summary for Secure Retaining Screws. 08/17/2020. Windchill Document #0000295306*
2. DePuy Synthes RFNA Locking Polymer Rationale. 09/30/2020. Windchill Document #0000302368
3. DePuy Synthes RFNA Poly Inlay Angular Stability Test Report. 09/29/2020. Windchill Document #000306551*
4. DePuy Synthes RFNA Nail Inlay Axial Pullout Design Verification Report. 08/20/2020. Windchill Document #0000293479*
5. DePuy Synthes RFN-Advanced System Locking Attachment Washer Rationale. 09/30/2020. Windchill Document #0000302371
6. DePuy Synthes RFNA Nail/LAW Static Construct Design Verification Report. 04/28/2020. Windchill Document #0000293480*
7. DePuy Synthes RFN-Advanced System Nail TKA Fit Rationale. 09/30/2020. Windchill Document #0000302370
8. DePuy Synthes Advanced Nail System Instrument Summary. 09/30/2020. Windchill Document #0000302373

*Bench testing may not be indicative of clinical performance.

For full product details and precautions, please consult the
Instructions For Use.

Not all products may currently be available in all markets.

Manufactured by:
Synthes USA, LLC
1101 Synthes Avenue
Monument,
CO 80132

Synthes GmbH
Eimattstrasse 3
4436 Oberdorf
Switzerland

Johnson & Johnson Medical Pty Ltd t/a DePuy Synthes
1-5 Khartoum Road, North Ryde NSW 2113 Australia
182079-210704 DSAU 08/2021
www.jnjmedicaldevices.com/en-AU

Note: For recognized manufacturer, refer to the product label.

 DePuy Synthes
PART OF THE JOHNSON & JOHNSON FAMILY OF COMPANIES

Advanced
NAILING SYSTEM

©DePuy Synthes 2020. All rights reserved.
149600-200812